

# Town of Canmore FireSmart Vegetation Management Plan Update

Prepared for:  
Town of Canmore Fire Rescue



Prepared by:  
Stew Walkinshaw  
**MONTANE**  
Forest Management Ltd.

March 2023

# 1 Overview

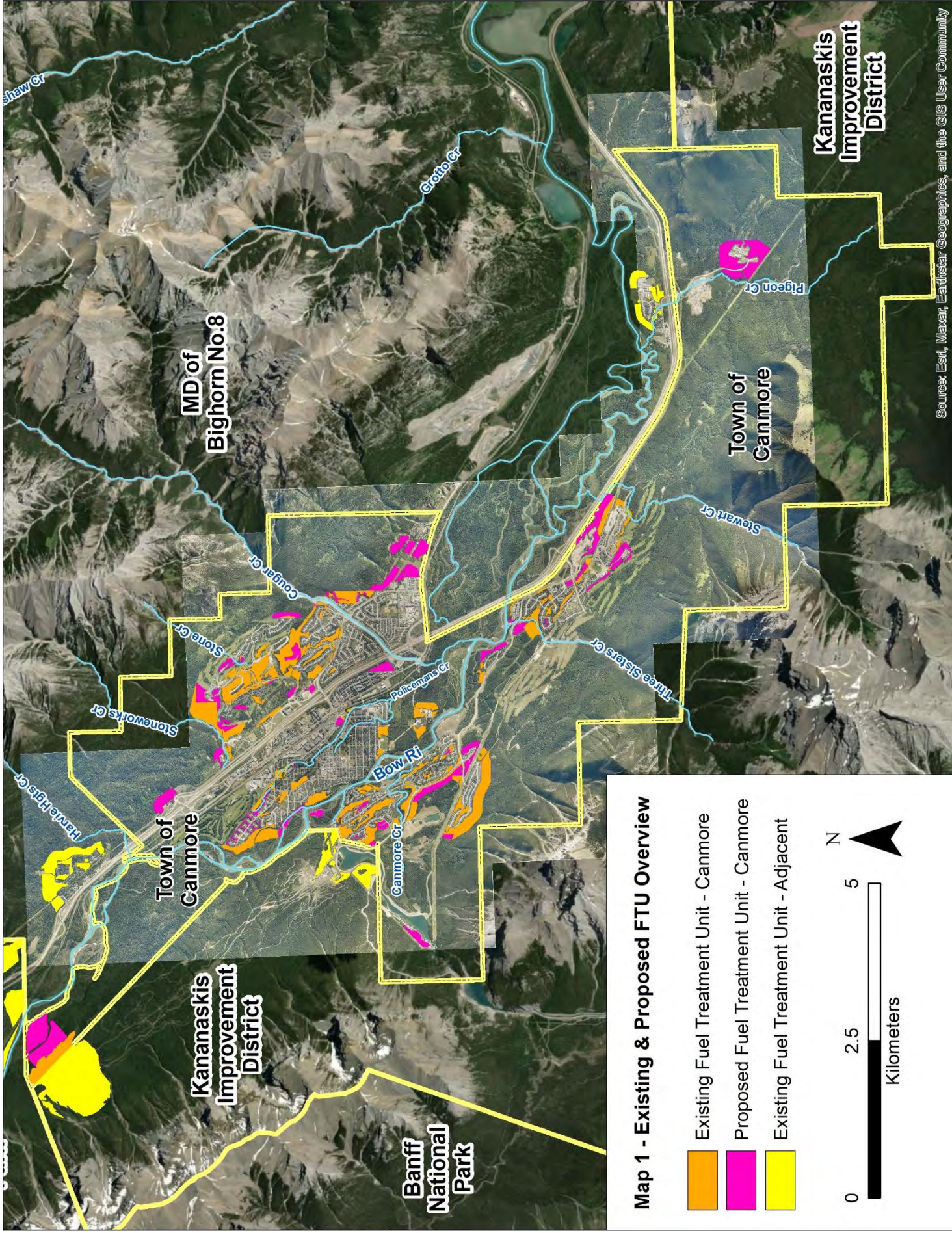
The objectives of the Town of Canmore FireSmart Vegetation Management Plan Update were to:

- Field-inspect existing fuel treatment units (FTU's) to determine future maintenance treatment needs
- Identify and field-inspect untreated areas to determine proposed new fuel treatment areas
- Update the FireSmart vegetation management database

Existing and proposed new fuel treatment units are identified for all Municipal, Provincial, and deeded developer/business-owner lands within the Town of Canmore (Map 1).

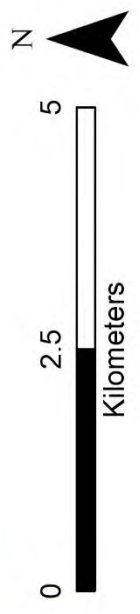
**The Town of Canmore, Alberta government, and private landowners are each responsible for maintenance of existing and implementation of proposed new FireSmart fuel treatment units on their lands.**

**The Town of Canmore will liaise with the responsible Provincial government departments and private developers/business owners regarding the fuel treatment units and the priorities identified in this Plan.**



**Map 1 - Existing & Proposed FTU Overview**

- Existing Fuel Treatment Unit - Canmore
- Proposed Fuel Treatment Unit - Canmore
- Existing Fuel Treatment Unit - Adjacent



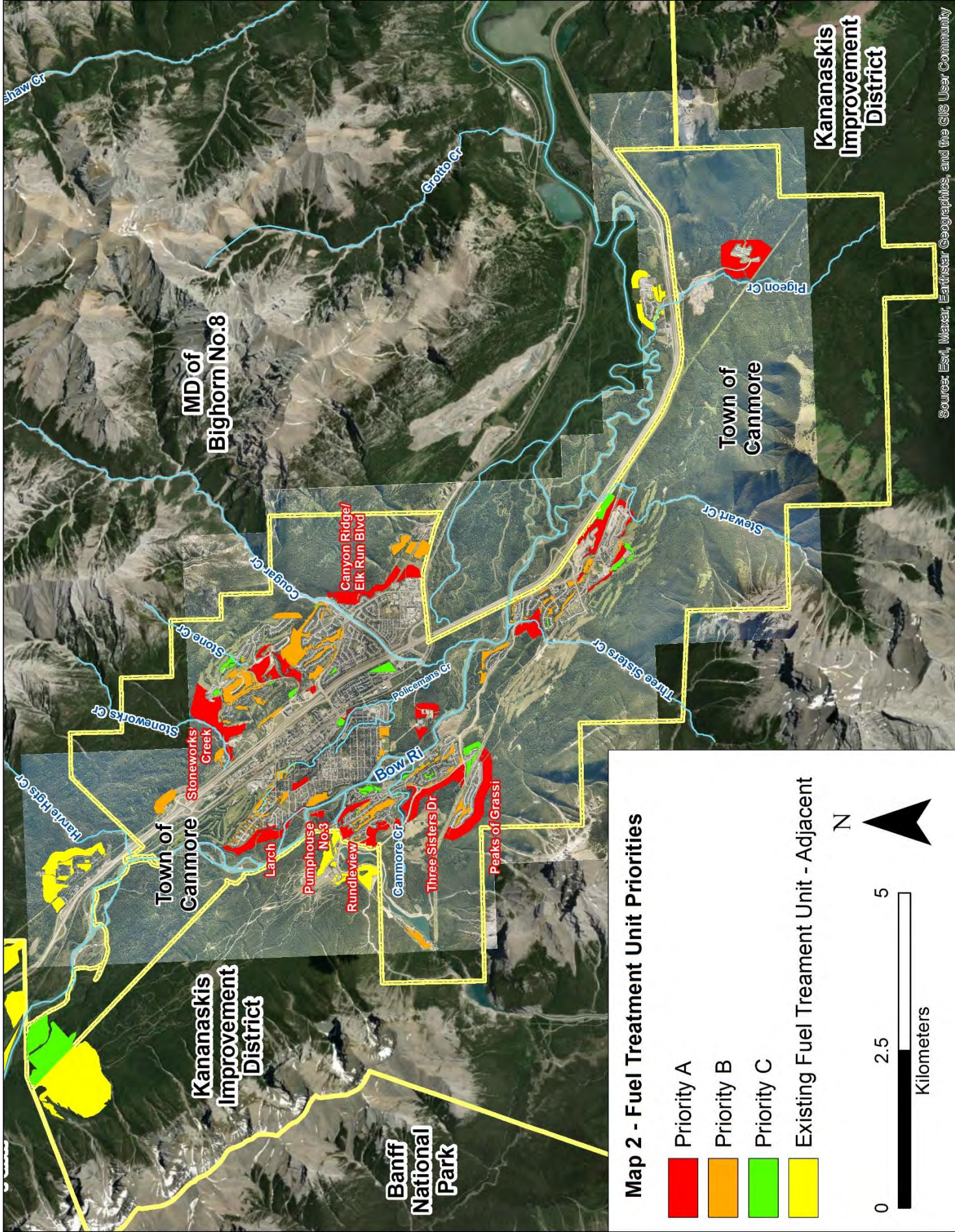
## 2 Treatment Priorities

Treatment priorities (Map 2) have been assigned to each existing and proposed new FTU based on the following criteria:

<b>Priority</b>	<b>Factors</b>
<b>A</b>	<ul style="list-style-type: none"><li>▪ Neighbourhood-Level Perimeter Fuelbreak OR</li><li>▪ Protecting Critical Infrastructure, Special, or Hazardous Values</li></ul>
<b>B</b>	<ul style="list-style-type: none"><li>▪ Community-Level Perimeter Fuelbreak OR</li><li>▪ Protecting Isolated/Individual Value</li></ul>
<b>C</b>	<ul style="list-style-type: none"><li>▪ Neighbourhood-Level Occluded Patch OR</li><li>▪ Landscape-Level Fuelbreak</li></ul>

Based on the above criteria, the following fuelbreaks have been determined as the highest priority for existing maintenance and/or new treatment:

- Canyon Ridge/Elk Run Blvd
- RundleView
- Peaks of Grassi
- Larch
- Stoneworks Creek
- Three Sisters Drive
- Engine Bridge Pumphouse No.3



### 3 Existing and Proposed Fuel Treatment Units

Existing and proposed fuel treatment units are identified for all Municipal, Provincial, and deeded developer/business-owner lands within the Town of Canmore (Maps 3A-3I).

**All existing FTU maintenance and new proposed treatments require preparation of a detailed fuel modification prescription by a qualified individual to identify constraints, block boundaries, and prescription standards prior to implementation.**

#### 3.1 Existing Fuel Treatment Unit Maintenance

A total of 230.1 hectares have been FireSmart fuel-reduced since 2000 (Table 1).

Table 1: Existing Fuel Treatment Unit (FTU) Summary

Area (Ha) by Land Manager			
Municipal	Provincial	Deeded	Total
77.6	97.5	55.0	230.1

Existing fuel treatment units on Municipal and Provincial lands within the Town of Canmore were evaluated and classified by Maintenance Treatment Type as described below. **The assigned Maintenance Treatment Type applies to the current (2023) state.**

#### Maintenance Treatment Type

Treatment Type	Factors
No Action	<ul style="list-style-type: none"> <li>▪ Inspect/re-evaluate in 5 years</li> </ul>
Maintain	<ul style="list-style-type: none"> <li>▪ Thin selected coniferous stems</li> <li>▪ Remove dead/down and dead standing</li> <li>▪ Prune ladder fuels on residual coniferous stems</li> </ul>
2 <sup>nd</sup> Pass TPC (Thin/Prune/Clean)	<ul style="list-style-type: none"> <li>▪ 2<sup>nd</sup> pass thin coniferous stems to reduce stem density</li> <li>▪ Remove dead/down and dead standing</li> <li>▪ Prune ladder fuels on residual coniferous stems</li> </ul>

Tables 2A (Maintenance/2<sup>nd</sup> Pass TPC) and 2B (No Action) provide a summary of all existing fuel treatment units on Municipal and Provincial lands within the Town of Canmore and Maps 3A-3I illustrate the recommended maintenance type for each FTU.

Table 2A: Existing Municipal & Provincial-Land FTU's Requiring Maintenance/2<sup>nd</sup> Pass TPC

FTU#	Area (Ha) by Land Manager			Initial Treatment Year	Last Maintenance Year	Recommended Maintenance Treatment	Priority
	Municipal	Provincial	Total				
05-1		16.76	16.76	2005		2 <sup>nd</sup> Pass TPC	C
08-1	3.88		3.88	2008		2 <sup>nd</sup> Pass TPC	A
10-1	3.04		3.04	2010		2 <sup>nd</sup> Pass TPC	A
10-2	1.30		1.30	2010		2 <sup>nd</sup> Pass TPC	A
11-1	0.62		0.62	2011		Maintain	C
11-2	1.88		6.88	2011		2 <sup>nd</sup> Pass TPC	A
	5.00						B
11-3	0.33		1.26	2011		2 <sup>nd</sup> Pass TPC	A
	0.93						Maintain
13-1	8.09		8.09	2013		2 <sup>nd</sup> Pass TPC	B
13-2	0.48		0.48	2013		2 <sup>nd</sup> Pass TPC	C
13-3	0.49		0.63	2013	2015	2 <sup>nd</sup> Pass TPC	C
	0.14						
13-4	2.28		2.28	2013		2 <sup>nd</sup> Pass TPC	A
13-5	2.44		4.58	2013		2 <sup>nd</sup> Pass TPC	B
	2.14						Maintain
13-6	1.40		1.40	2013		2 <sup>nd</sup> Pass TPC	C
14-1		12.19	12.19	2014		2 <sup>nd</sup> Pass TPC	A
14-2	0.10	3.94	4.04	2014		2 <sup>nd</sup> Pass TPC	B
14-3		3.15	3.15	2014		2 <sup>nd</sup> Pass TPC	A
15-1	3.09		3.09	2015		2 <sup>nd</sup> Pass TPC	B
15-2	1.62		1.62	2015		2 <sup>nd</sup> Pass TPC	B
15-3	1.54		1.54	2015		2 <sup>nd</sup> Pass TPC	B
15-4	0.45		0.45	2015		Maintain	B
15-5	0.51		0.51	2015		2 <sup>nd</sup> Pass TPC	B
15-6	0.45		0.45	2015		2 <sup>nd</sup> Pass TPC	A
15-7	2.46		2.46	2015		2 <sup>nd</sup> Pass TPC	A
15-8	3.66		3.66	2015		2 <sup>nd</sup> Pass TPC	A
15-9	3.55		3.55	2015		2 <sup>nd</sup> Pass TPC	B
15-10	0.17		0.17	2015		2 <sup>nd</sup> Pass TPC	A
15-11		1.33	1.33	2015		2 <sup>nd</sup> Pass TPC	B
15-12		2.70	2.70	2015		2 <sup>nd</sup> Pass TPC	A
15-13		1.84	1.84	2015		2 <sup>nd</sup> Pass TPC	A
15-14		0.64	0.64	2015		2 <sup>nd</sup> Pass TPC	C
16-1	0.54	22.47	23.01	2016		2 <sup>nd</sup> Pass TPC	A
17-1		18.65	18.65	2017		2 <sup>nd</sup> Pass TPC	A
19-4	0.42	0.35	0.77	2019		2 <sup>nd</sup> Pass TPC	B
19-5	0.34		0.34	2019		Maintain	A
19-6	1.97		1.97	2019		Maintain	B
<b>Total Area (Ha)</b>	<b>55.31</b>	<b>84.02</b>	<b>139.33</b>				

Table 2B: Existing Municipal & Provincial-Land FTU's Requiring No Action

FTU#	Area (Ha) by Land Manager			Initial Treatment Year	Last Maintenance Year	Recommended Maintenance Treatment	Priority
	Municipal	Provincial	Total				
01-1	0.70		0.70	2001	2019	No Action	B
01-2	1.25		1.25	2001	2019	No Action	B
01-3	0.82		0.82	2001	2019	No Action	B
01-4	1.48		1.48	2001	2019	No Action	B
01-5	0.48		0.48	2001		No Action	B
15-15	0.71		0.71	2015	2022	No Action	B
17-2		7.87	7.87	2017		No Action	A
19-1	2.35		2.35	2019		No Action	B
19-2	0.48		0.48	2019		No Action	A
19-3	1.76		1.76	2019		No Action	B
19-5	0.27		0.27	2019		No Action	A
20-1	0.56		1.33	2020		No Action	A B
	0.77						
21-1	0.07		0.07	2021		No Action	A
22-1	5.32	5.04	10.36	2022		No Action	A
22-2	1.50	0.53	2.73	2022		No Action	B C
	0.70						
22-3	0.45		1.18	2022		No Action	B C
	0.73						
22-4	1.63		1.63	2022		No Action	B
22-5	0.28		0.28	2022		No Action	A
<b>Total Area (Ha)</b>	<b>22.31</b>	<b>13.44</b>	<b>35.75</b>				



### 3.2 Proposed New Fuel Treatment Units

New fuel treatment units are proposed on Municipal, Provincial, and deeded developer lands (Table 3 and Maps 3A-3I) to:

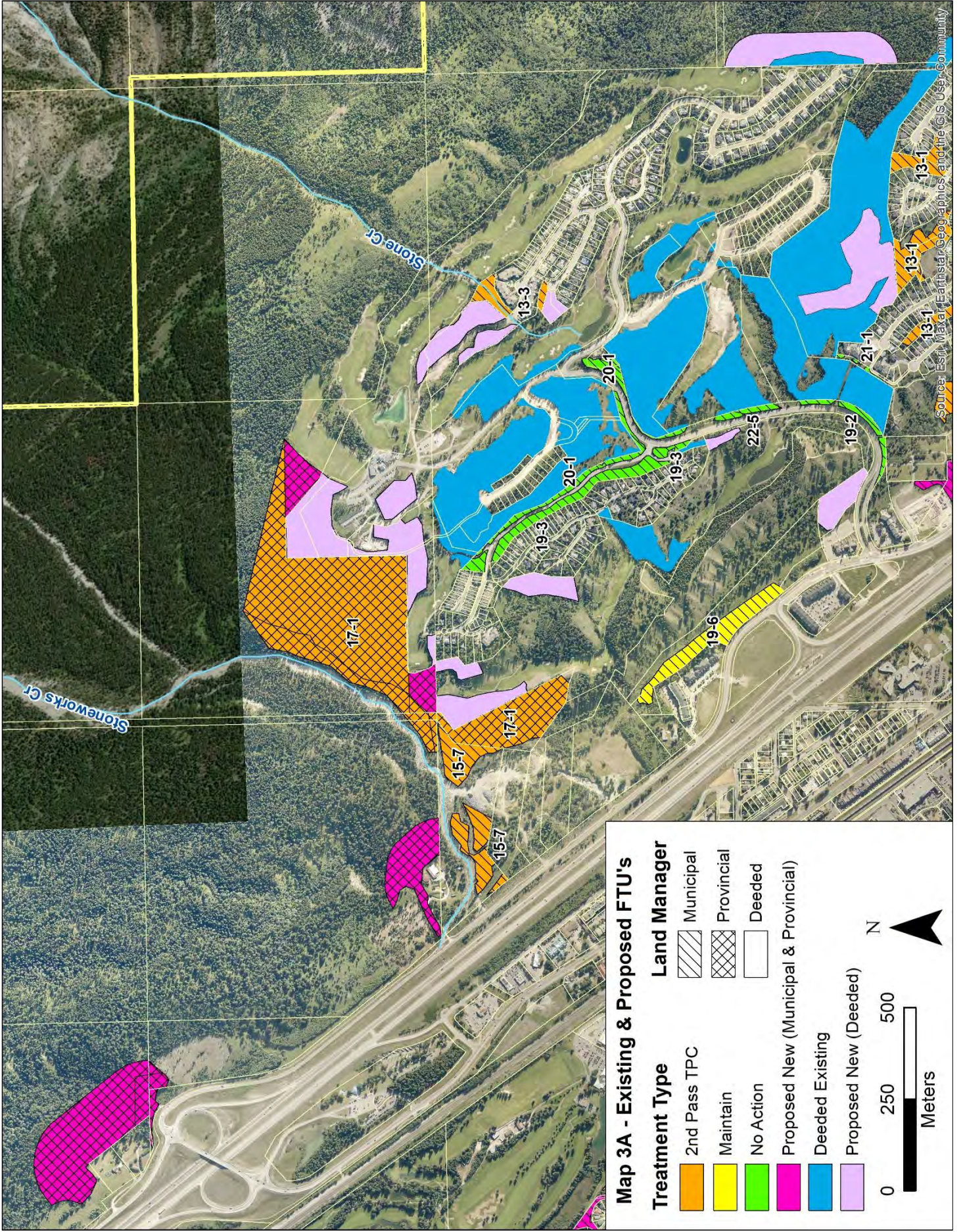
- Establish new fuelbreaks around isolated and/or infrastructure facilities and new developments
- Strengthen existing fuelbreaks

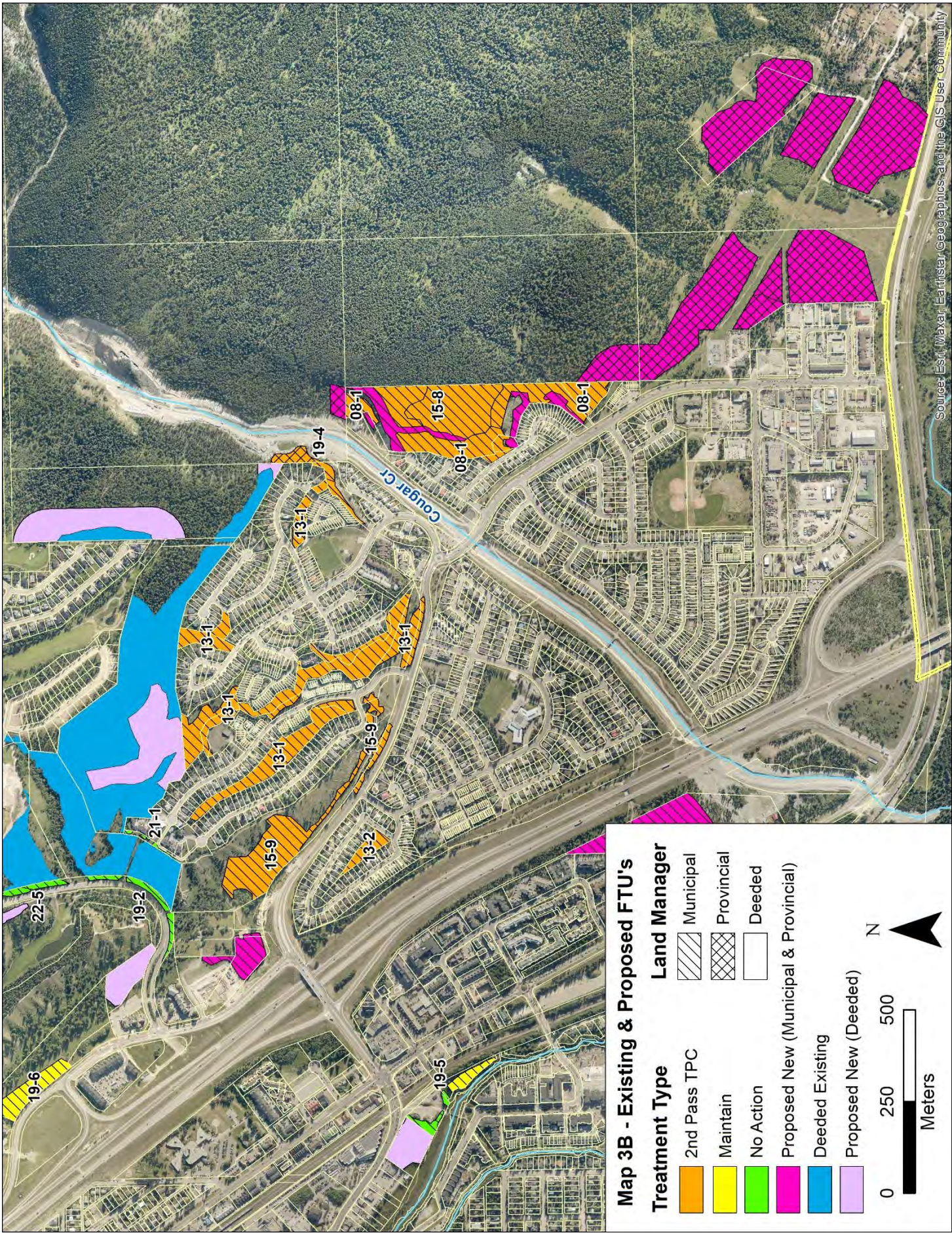
Provincial lands include Provincial Park and occupied and vacant crown land parcels within the Town of Canmore.

Priorities have been assigned using the same criteria used for existing FTU's.

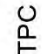
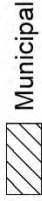

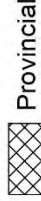

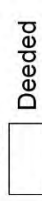


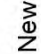
Table 3: Proposed New Fuel Treatment Unit (FTU) Summary

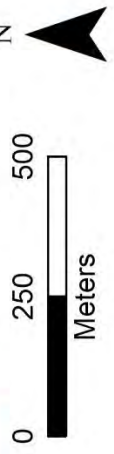
<b>Area (Ha) by Land Manager</b>			
<b>Municipal</b>	<b>Provincial</b>	<b>Deeded</b>	<b>Total</b>
13.8	99.5	57.4	170.7



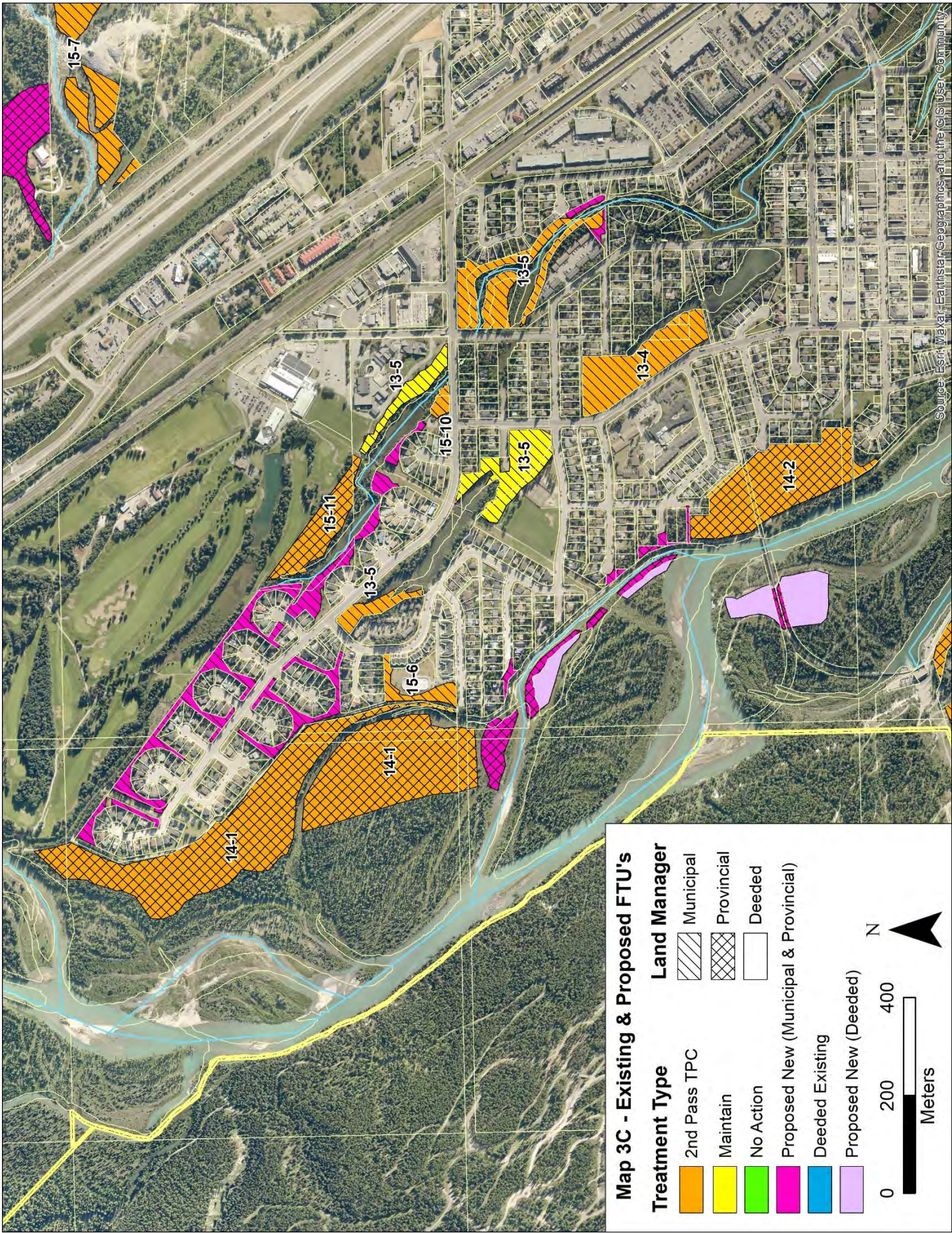


**Map 3B - Existing & Proposed FTU's**

Treatment Type	Land Manager
	 Municipal
	 Provincial
	 Deeded
	
	
	

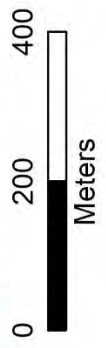


Source: Esri, Maxar, Earthstar, GeoGraphics, and the GIS User Community



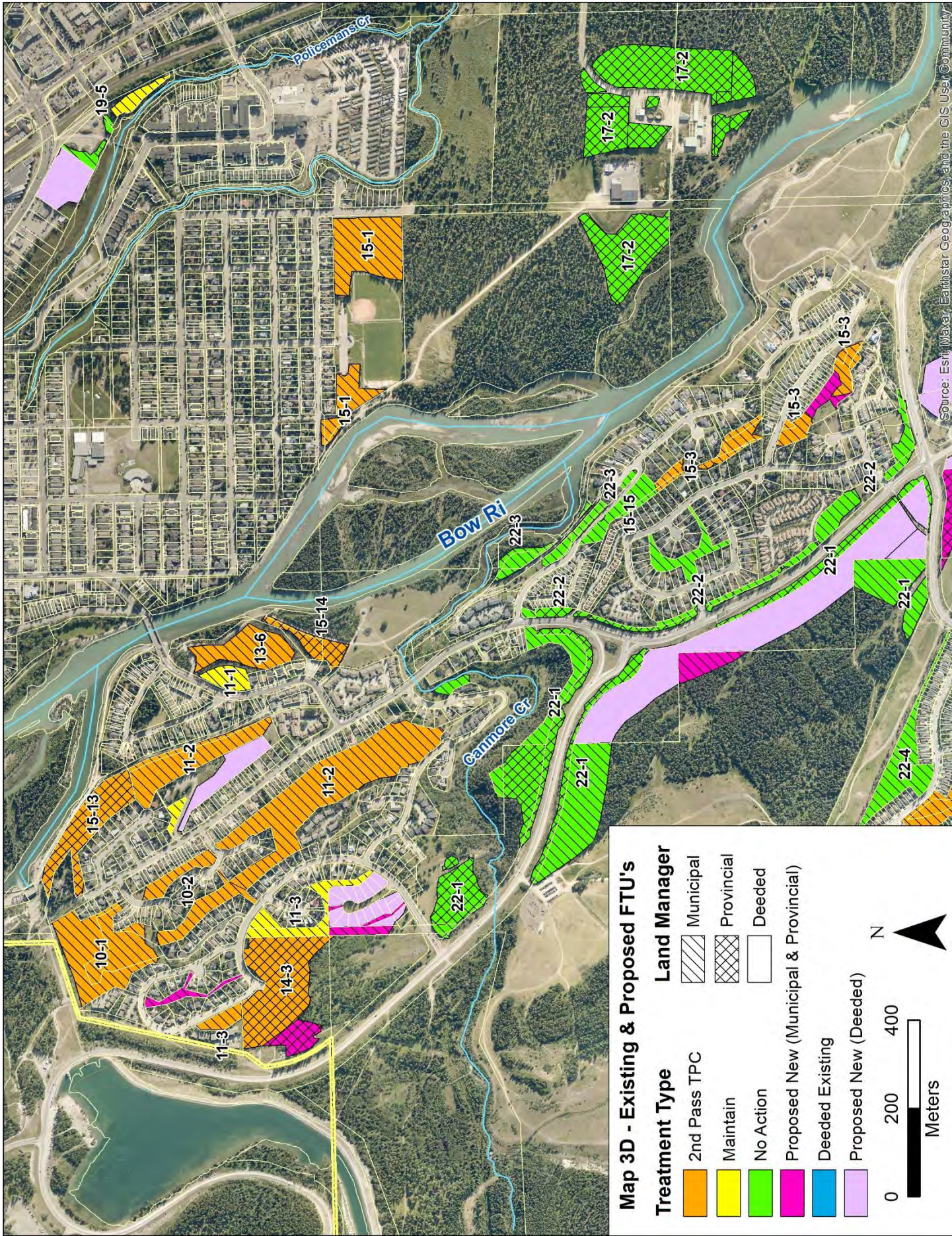
**Map 3C - Existing & Proposed FTU's**

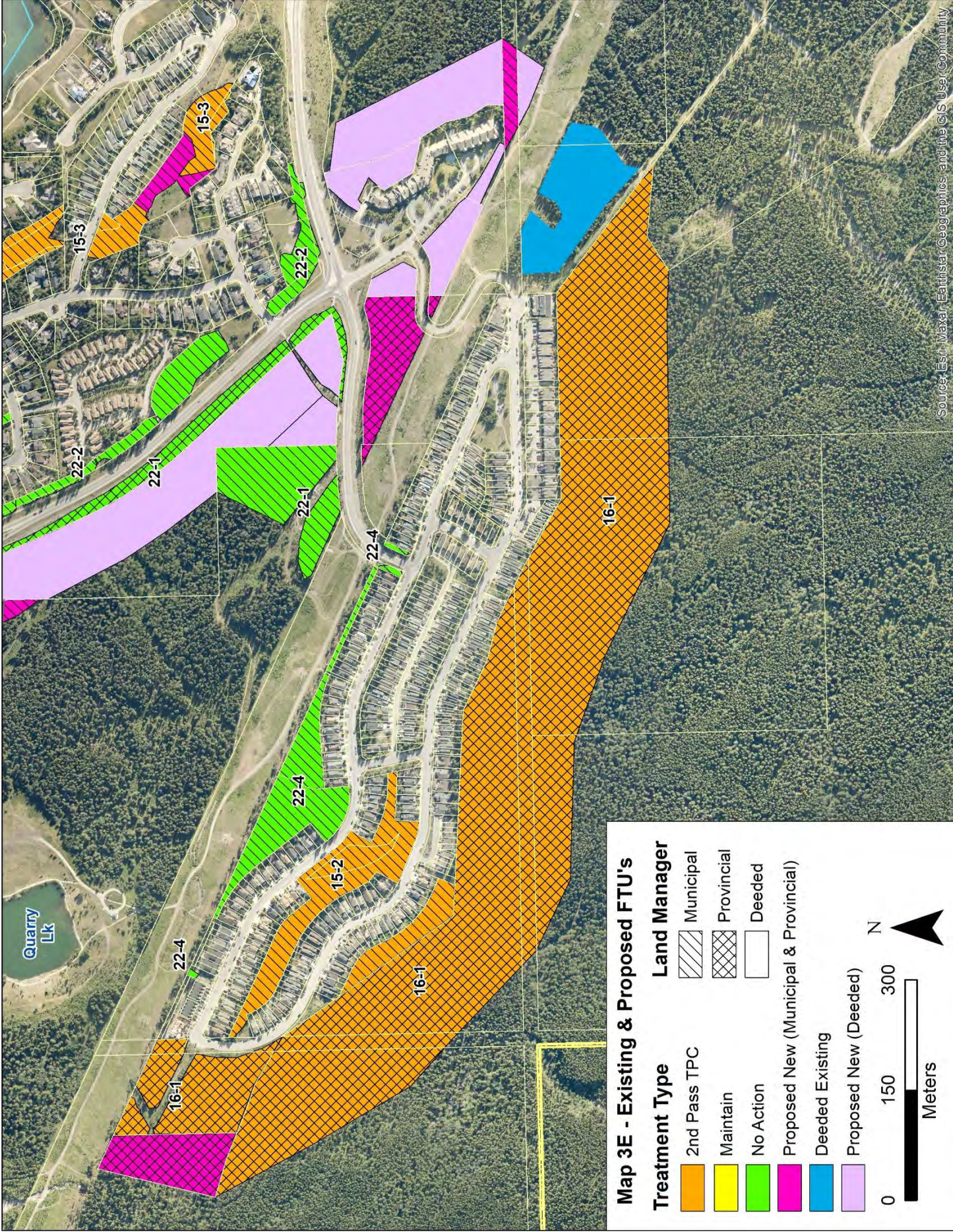
Treatment Type	Land Manager
2nd Pass TPC	Municipal
Maintain	Provincial
No Action	Deeded
Proposed New (Municipal & Provincial)	
Deeded Existing	
Proposed New (Deeded)	



Meters

Source: Esri, Maxar, Earthstar Geographics, and the GIS User Community





**Map 3E - Existing & Proposed FTU's**

Treatment Type	Land Manager
2nd Pass TPC	Municipal
Maintain	Provincial
No Action	Deeded
Proposed New (Municipal & Provincial)	
Deeded Existing	
Proposed New (Deeded)	

