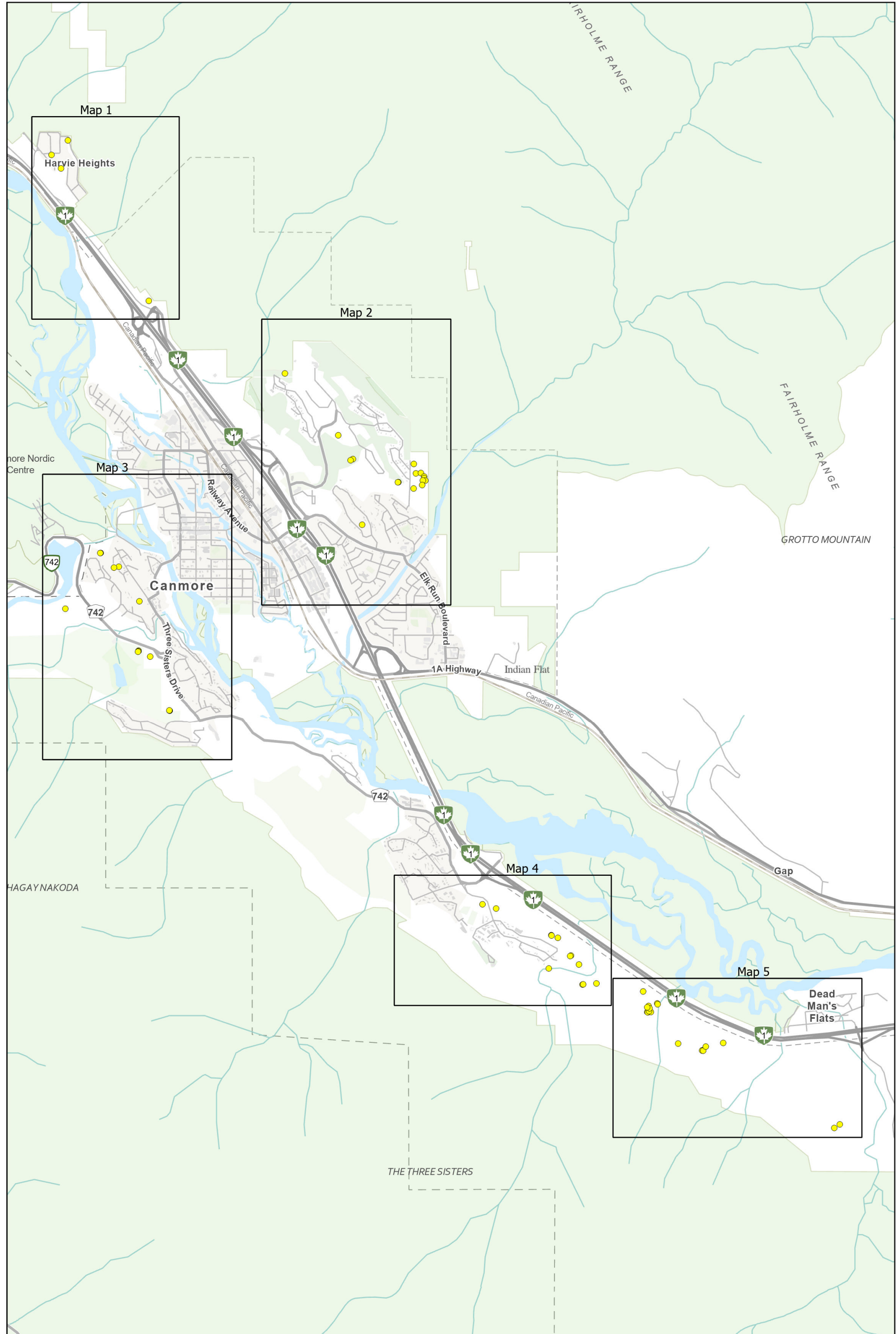


**Appendix C:
2023 Mountain Pine Beetle Control Program
Fell & Burn Tree List**

| Tag number | Date REMOVED | DBH | Latitude | Longitude | COMMENTS |
|------------|--------------|-----|----------|-------------|---------------|
| 1 | | L | 51.04116 | -115.289175 | |
| 2 | | L | 51.04112 | -115.289093 | |
| 3 | | M | 51.04116 | -115.288597 | |
| 4 | | M | 51.04125 | -115.288889 | |
| 5 | | L | 51.04202 | -115.287585 | |
| 6 | | L | 51.04193 | -115.287526 | |
| 7 | | L | 51.04176 | -115.288962 | |
| 8 | | L | 51.04153 | -115.288808 | |
| 9 | | L | 51.04163 | -115.289179 | |
| 10 | | M | 51.04321 | -115.289824 | |
| 11 | | L | 51.03801 | -115.284269 | |
| 12 | | M | 51.03734 | -115.280432 | |
| 13 | | M | 51.03732 | -115.280464 | |
| 14 | | L | 51.0373 | -115.280292 | |
| 15 | | L | 51.03771 | -115.279878 | |
| 16 | | L | 51.03808 | -115.277111 | |
| 17 | | L | 51.02995 | -115.258603 | |
| 18 | | L | 51.02959 | -115.259474 | BLOWDOWN AREA |
| 19 | | M | 51.04401 | -115.297241 | BESIDE TRAIL |
| 20 | | L | 51.04551 | -115.304808 | |
| 21 | | L | 51.0439 | -115.299446 | |
| 22 | | L | 51.04392 | -115.299344 | OLD BURN SITE |
| 23 | | M | 51.0459 | -115.300018 | |
| 24 | | L | 51.04679 | -115.301282 | |
| 25 | | L | 51.04674 | -115.301413 | 2ND YEAR |
| 26 | | L | 51.04856 | -115.30337 | |
| 27 | | M | 51.04882 | -115.304402 | |
| 28 | | M | 51.04879 | -115.304368 | |

| | | | | | |
|----|--|----|----------|-------------|--|
| 29 | | M | 51.05148 | -115.313176 | ON EDGE OF NEW DEVELIMENT |
| 30 | | L | 51.05191 | -115.315334 | |
| 31 | | M | 51.07126 | -115.364998 | |
| 32 | | L | 51.07127 | -115.365052 | |
| 33 | | M | 51.07129 | -115.365055 | |
| 34 | | L | 51.07665 | -115.368099 | |
| 35 | | M | 51.07724 | -115.369947 | |
| 36 | | L | 51.07718 | -115.369955 | |
| 37 | | M | 51.07713 | -115.370034 | |
| 38 | | M | 51.08697 | -115.375959 | |
| 39 | | L | 51.08216 | -115.369814 | OLD BURN SITE |
| 40 | | L | 51.08141 | -115.381569 | |
| 41 | | L | 51.1266 | -115.383769 | |
| 42 | | L | 51.12805 | -115.38116 | |
| 43 | | L | 51.12526 | -115.382253 | PRIVATE LAND |
| 44 | | L | 51.08978 | -115.334442 | NEAR RES |
| 45 | | L | 51.09584 | -115.326241 | |
| 46 | | L | 51.09489 | -115.325905 | |
| 47 | | L | 51.09339 | -115.326272 | |
| 48 | | S | 51.09402 | -115.328687 | |
| 49 | | L | 51.09401 | -115.328768 | |
| 50 | | L | 51.09869 | -115.338237 | |
| 51 | | L | 51.09633 | -115.335908 | |
| 52 | | L | 51.09621 | -115.336282 | |
| 53 | | L | 51.10485 | -115.346704 | |
| 54 | | M | 51.09494 | -115.325111 | |
| 55 | | XL | 51.11208 | -115.368316 | |
| 56 | | L | 51.08696 | -115.376023 | |
| 57 | | L | 51.0856 | -115.37308 | MOVE AWAY FROM HOUSE/ NEAR SHED RESIDENTIAL |
| 58 | | M | 51.08551 | -115.373852 | MOVE AWAY FROM HOUSE IN BACKYARD RESIDENTIAL |
| 59 | | M | 51.09458 | -115.324592 | |
| 60 | | M | 51.09443 | -115.324599 | |
| 61 | | M | 51.09418 | -115.324403 | |
| 62 | | M | 51.09419 | -115.324808 | |

| | | | | | |
|----|--|---|----------|------------|---|
| 63 | | M | 51.09374 | -115.32491 | |
| | | | | | |
| | | | | | |
| | | | | | 0 |

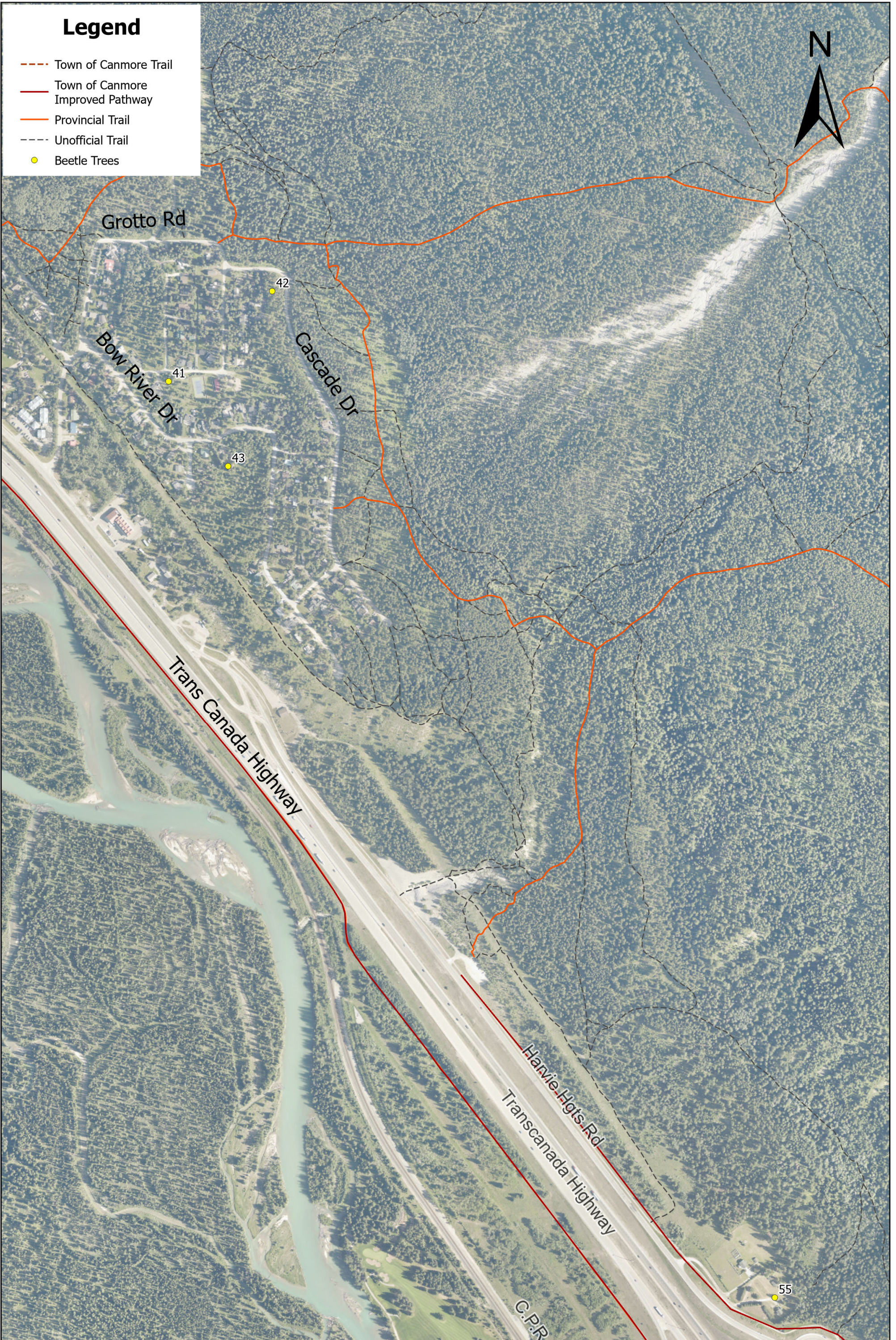


**2023 MPB Infested Tree Control
Overview Map
63 Trees**



Legend

- Town of Canmore Trail
- Town of Canmore Improved Pathway
- Provincial Trail
- Unofficial Trail
- Beetle Trees



2023 MPB Infested Tree Control I. Harvie Heights 4 Trees

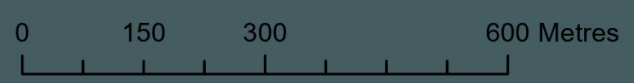


Legend

- Town of Canmore Trail
- Town of Canmore Improved Pathway
- Provincial Trail
- Unofficial Trail
- Beetle Trees



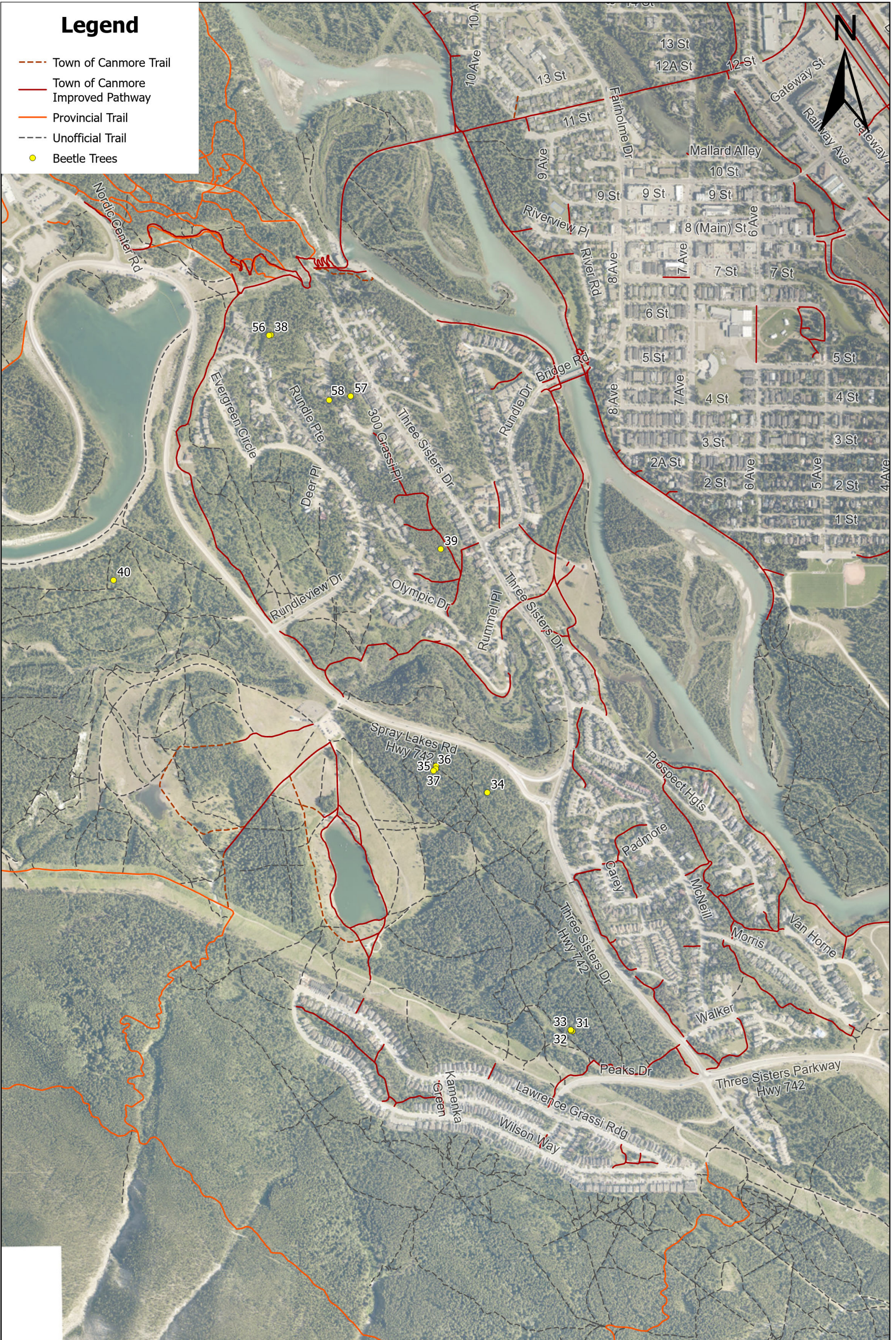
2023 MPB Infested Tree Control 2. Silvertip and Cougar Creek 16 Trees



Date: 2023-11-17 Name: MPB_InfestedTreeControl_2023
Map produced by Town of Canmore GIS Services.

Legend

- - - Town of Canmore Trail
- Town of Canmore Improved Pathway
- Provincial Trail
- - - Unofficial Trail
- Beetle Trees



2023 MPB Infested Tree Control 3. Rundlevue and Quarry Lake 13 Trees

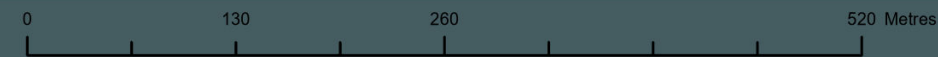


Legend

- Town of Canmore Trail
- Town of Canmore Improved Pathway
- Provincial Trail
- Unofficial Trail
- Beetle Trees



2023 MPB Infested Tree Control
4. Three Sisters and Stewart Creek
12 Trees

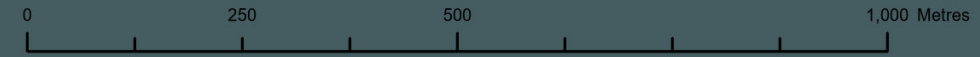




Legend

- Town of Canmore Trail
- Town of Canmore Improved Pathway
- Provincial Trail
- Unofficial Trail
- Beetle Trees

2023 MPB Infested Tree Control
5. Thunderstone Quarry
16 Trees



Date: 2023-11-17 Name: MPB_InfestedTreeControl_2023
 Map produced by Town of Canmore GIS Services