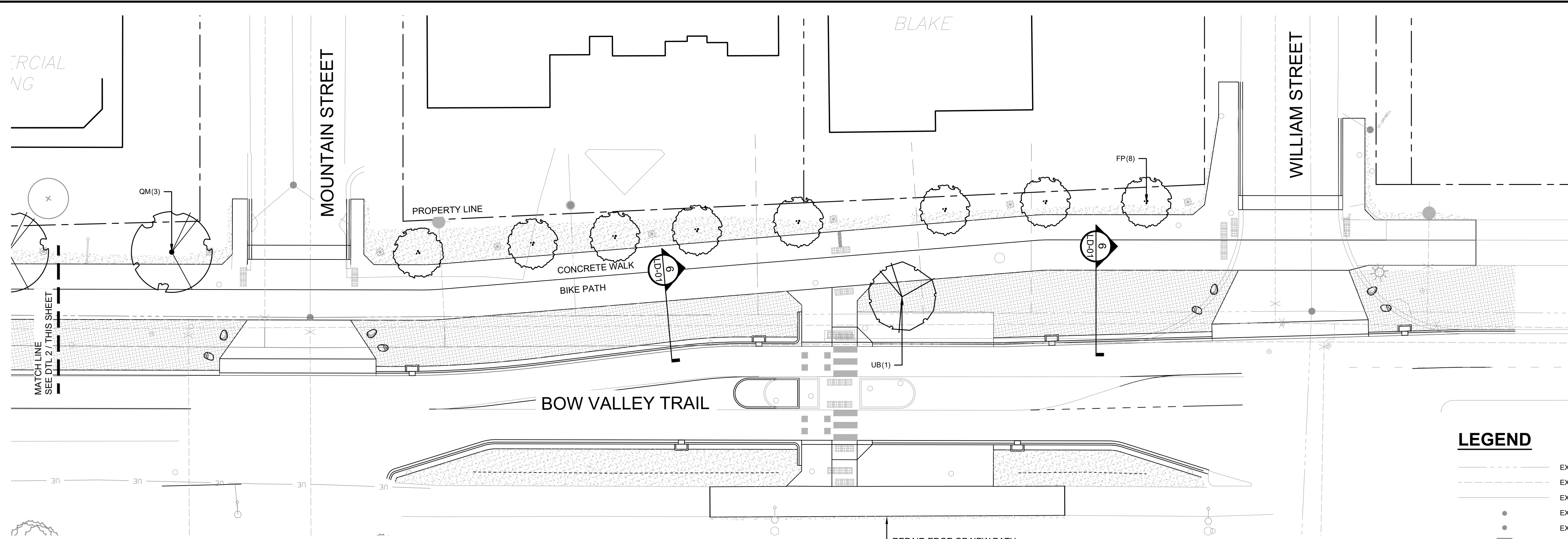


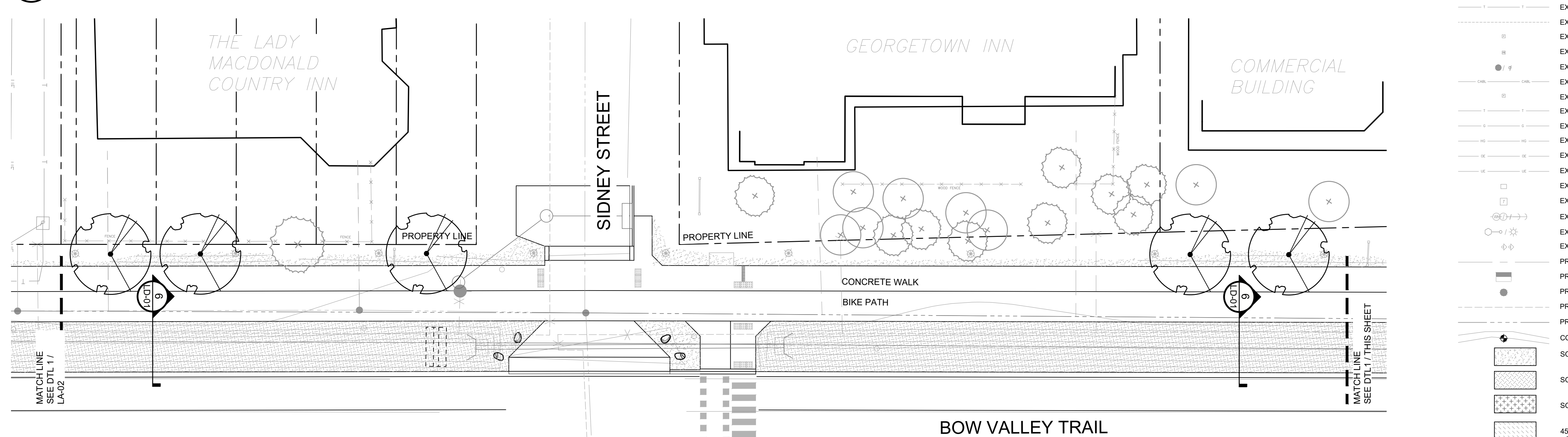


TOWN OF CANMORE TEEPEE TOWN PHASE 2A LANDSCAPING

PROJECT NUMBER: CAP7297/CAP2024
ISSUED FOR TENDER



1 LANDSCAPE PLAN
PLAN SCALE 1:250



2 LANDSCAPE PLAN
PLAN SCALE 1:250

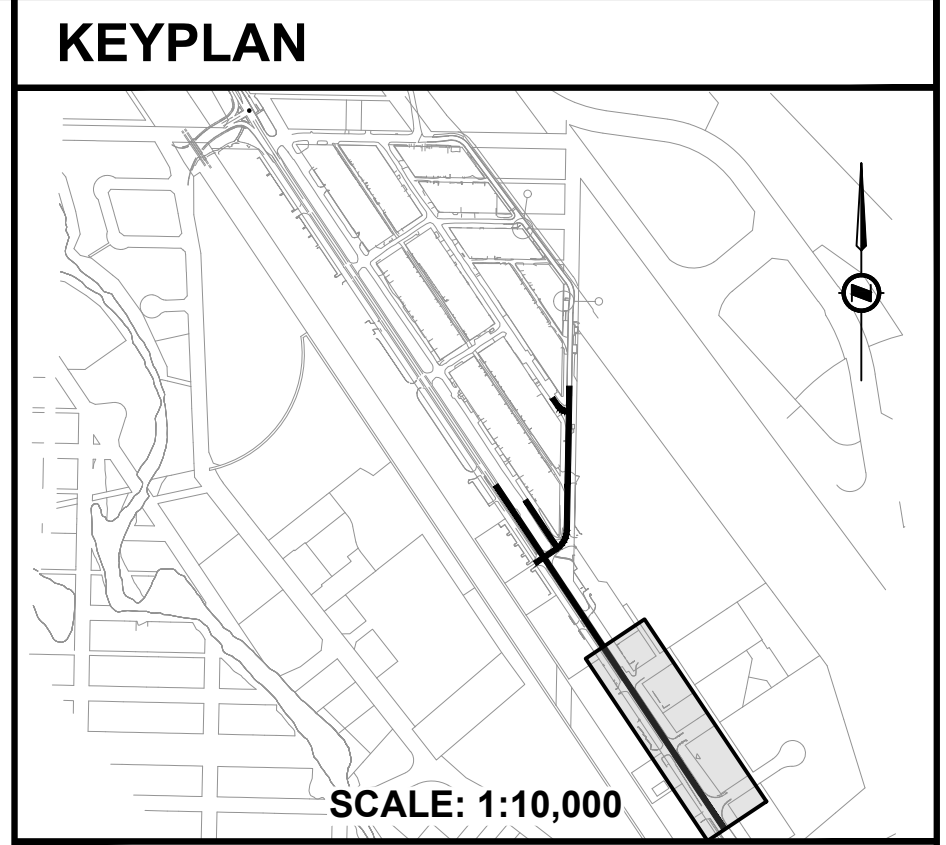
PLANT SCHEDULE									
QTY	BOTANICAL NAME	COMMON NAME	REMARKS	SIZE	BR	QTY	BOTANICAL NAME	COMMON NAME	REMARKS
7	<i>Picea pungens</i>	Colorado Spruce	Ball & Burlap	3000mm Ht.		381	<i>Juncus balticus</i>	Baltic Rush	210mm Pot 2 Years Old
17	<i>Fraxinus pennsylvanica</i> 'Rugby'	Prairie Spire Ash	Ball & Burlap	60-70mm Cal.		402	<i>Juncus torreyi</i>	Torrey's Rush	210mm Pot 2 Years Old
1	<i>Populus tremuloides</i>	Trembling Aspen	Ball & Burlap	60-70mm Cal.		15	<i>Juniperus horizontalis</i>	Creeping Juniper	#5 Container 450mm Sp.
20	<i>Quercus macrocarpa</i>	Burr Oak	Ball & Burlap	60-70mm Cal.		14	<i>Potentilla fruticosa</i> 'Abbotswood'	Abbotswood Potentilla	#2 Container 300mm Ht.
2	<i>Ulmus americana</i> 'Brandon'	Brandon American Elm	Ball & Burlap	60-70mm Cal.		65	<i>Spiraea betulifolia</i>	Birchleaf Spirea	#2 Container 300mm Ht.
823	<i>Bouteloua gracilis</i>	Blue Grama Grass	210mm Pot	2 Years Old		43	<i>Symphoricarpos albus</i>	Snowberry	#2 Container 300mm Ht.
314	<i>Calamagrostis canadensis</i>	Bluejoint Reed Grass	210mm Pot	2 Years Old					
247	<i>Carex atherodes</i>	Slough Sedge	210mm Pot	2 Years Old					
461	<i>Carex bebbii</i>	Bebb's Sedge	210mm Pot	2 Years Old					
623	<i>Deschampsia cespitosa</i>	Tufted Hair Grass	210mm Pot	2 Years Old					

TREE SETBACKS	
DISTANCE FROM LIGHT STANDARDS	3.5m
DISTANCE FROM POWER HARDWARE	3.5m
DISTANCE FROM FIRE HYDRANTS	3.5m
DISTANCE FROM STOP SIGNS	3.5m
DISTANCE FROM TRANSIT ZONES	3.5m
DISTANCE FROM OTHER SIGNS	3.5m
DISTANCE FROM PRIVATE PROPERTY	1.0m
DISTANCE FROM SHALLOW UNDERGROUND UTILITIES	1.0m
DISTANCE FROM GAS OR OIL ROW	PER UTILITY
DISTANCE FROM DEEP UNDERGROUND UTILITIES	1.5m
DISTANCE FROM SANITARY AND STORM SEWERS	1.8m
DISTANCE FROM SANITARY AND STORM MANHOLES	2.0m
DISTANCE FROM WATER MAINS	2.5m

NOTE: CONTRACTOR TO STAKE ALL TREE LOCATIONS AFTER ALL UTILITY LOCATES ARE COMPLETE AND PRIOR TO INSTALLATION OF PLANT MATERIAL FOR REVIEW AND APPROVAL BY CONSULTANT.

LEGEND

- EX SANITARY LINE
- EX WATER LINE
- EX STORM LINE
- EX SANITARY MANHOLE
- EX STORM MANHOLE
- EX CATCHBASIN
- EX DOUBLE CATCHBASIN
- EX DRYWELL
- EX TELUS COMM LINE
- EX TELUS AERIAL COMM LINE
- EX TELUS PEDESTAL
- EX TELUS PULLBOX
- EX TELUS MANHOLE / VAULT
- EX SHAW COMM LINE
- EX SHAW PEDESTAL
- EX ZAYO COMM LINE
- EX ATCO LP GAS LINE
- EX ATCO HP GAS LINE
- EX FORTIS OVERHEAD POWER
- EX FORTIS UNDERGROUND POWER
- EX FORTIS UTILITY VAULT
- EX FORTIS TRANSFORMER
- EX FORTIS POLE / ANCHOR
- EX STREETLIGHT
- EX TRAFFIC SIGNAL POLE
- PR STORM MAIN
- PR CATCHBASIN
- PR MANHOLE
- PR WATER LINE
- PR SANITARY LINE
- CONTOURS (0.2m INTERVAL)
- SOD ON 200mm DEPTH TOPSOIL
- SOD ON 500mm DEPTH TOPSOIL
- SOD ON 750mm DEPTH TOPSOIL
- 450mm DEPTH SOIL MIX PLANTING BED - SEE PLANTING IN CONCRETE DETAIL ON LD-02
- 300mm DEPTH RIP RAP ON COMPACTED S
- RIP RAP BY OTHERS (APPROX. EXTENTS)
- EXISTING TREES
- PROPOSED TREES
- BOULDERS
- BENCH - BY OTHERS
- STREETLIGHT
- CHECK DAM - SEE DETAIL ON LD-02



NOTES

ALBERTA ONECALL

NAD 83 COORDINATES

NO.	DESCRIPTION	DATE	BY	APPD
1	ISSUED FOR TENDER	2024-02-12	SP	JS

PERMIT

SEAL

The Alberta Association of Landscape Architects

Jeff Schurek
Feb. 12 2024

DESIGNED	BY	DATE
	SP	2024-02-12
DRAWN	BY	DATE
	SP	2024-02-12
CHECKED	BY	DATE
	JS	2024-02-12

SCALE 1:250

Town of CANMORE

ISL

PROJECT

TOWN OF CANMORE TEEPEE TOWN PHASE 2A

SEC. 33 - TWP. 24 - RGE. 10 - W 5th M

SHEET TITLE

LANDSCAPE PLAN PLAN

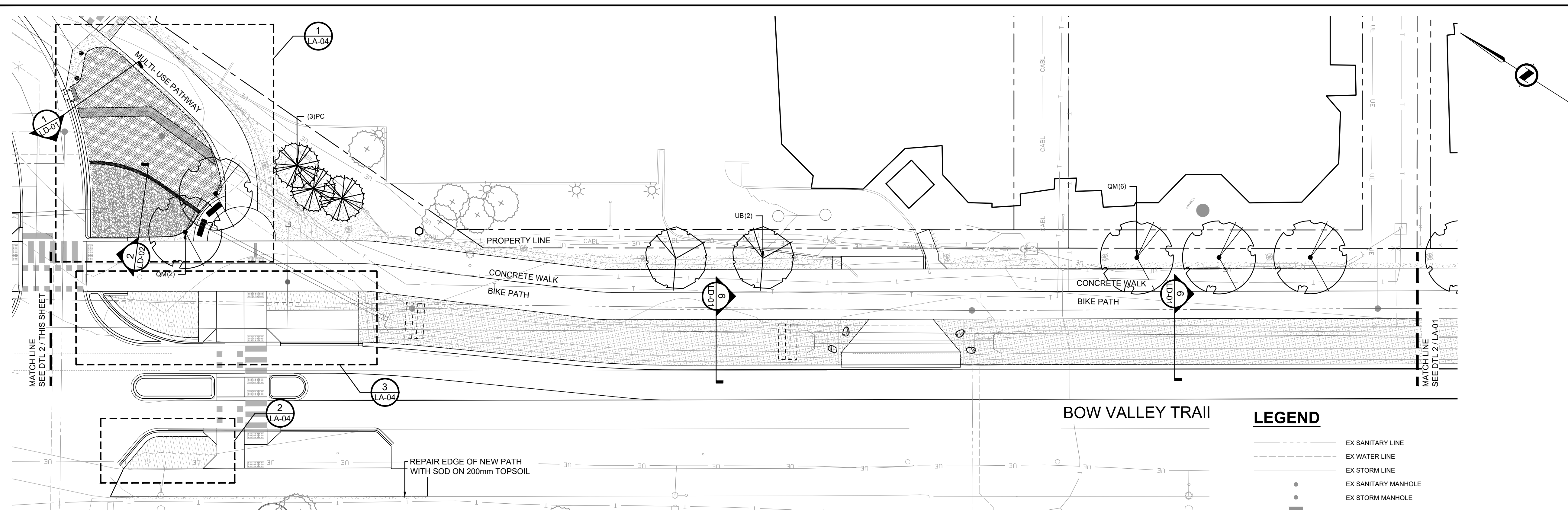
FILE NO. 62072_P-01-03.dwg	ENG DWG NO.
SHEET ID. LA-01	SHEET NO. 1

BY	DATE	PROFILE NO.
SP	24.02.12	

ISC. SHEET SIZE ANSI D 25 mm

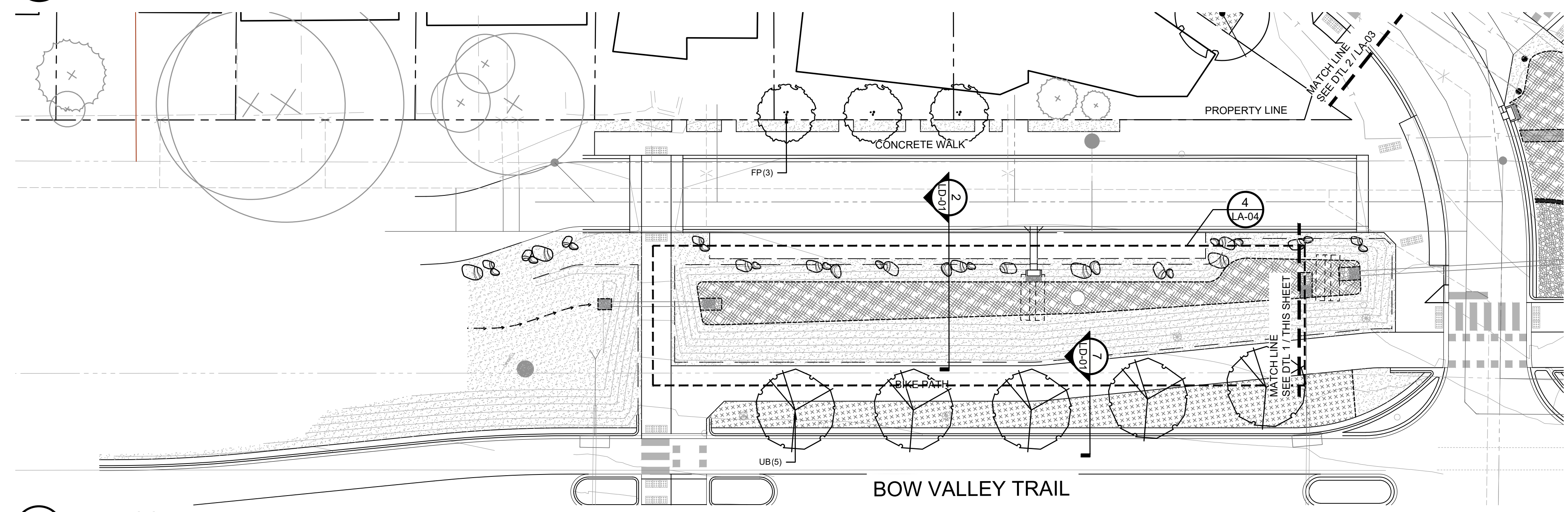
FILE: G:\PROJECTS\2024\02\062072_TEEPEE_TOWN_PHASE_2A_DD_CADD\20_DRAFTING\202_PROD\LANDSCAPE\62072_P-01-03.DWG [DATE: February 12, 2024 3:17:29 PM]

FILE: G:\PROJECTS\20240206\20240206_2A_DD_CAV02_DRAFTING\2024_PROD\LANDSCAPE\LA-02.dwg [DATE: February 12, 2024 3:17:54 PM]



1 LANDSCAPE PLAN
PLAN

SCALE 1:250



2 LANDSCAPE PLAN
PLAN

SCALE 1:250

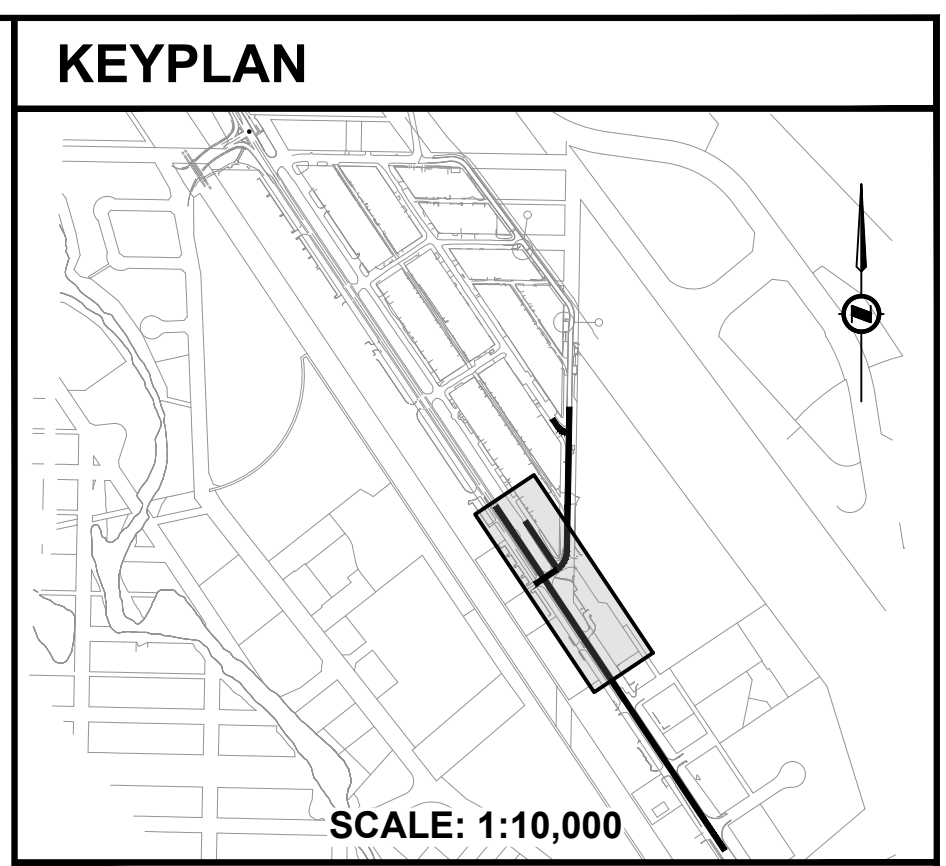
PLANT SCHEDULE

CONIFEROUS TREE	BOTANICAL NAME	COMMON NAME	REMARKS	SIZE
PC	<i>Picea pungens</i>	Colorado Spruce	Ball & Burlap	3000mm Ht.
DECIDUOUS TREES	BOTANICAL NAME	COMMON NAME	REMARKS	SIZE
FP	<i>Fraxinus pennsylvanica</i> 'Rugby'	Prairie Spire Ash	Ball & Burlap	60-70mm Cal.
PS	<i>Populus tremuloides</i>	Trembling Aspen	Ball & Burlap	60-70mm Cal.
QM	<i>Quercus macrocarpa</i>	Burr Oak	Ball & Burlap	60-70mm Cal.
UB	<i>Ulmus americana</i> 'Brandon'	Brandon American Elm	Ball & Burlap	60-70mm Cal.

SEE SHEET LA-01 FOR COMPLETE PLANT LIST

LEGEND

- EX SANITARY LINE
- EX WATER LINE
- EX STORM LINE
- EX SANITARY MANHOLE
- EX STORM MANHOLE
- EX CATCHBASIN
- EX DOUBLE CATCHBASIN
- EX DRYWELL
- EX TELUS COMM LINE
- EX TELUS AERIAL COMM LINE
- EX TELUS PEDESTAL
- EX TELUS PULLBOX
- EX TELUS MANHOLE / VAULT
- EX SHAW COMM LINE
- EX SHAW PEDESTAL
- EX ZAYO COMM LINE
- EX ATCO LP GAS LINE
- EX ATCO HP GAS LINE
- EX FORTIS OVERHEAD POWER
- EX FORTIS UNDERGROUND POWER
- EX FORTIS UTILITY VAULT
- EX FORTIS TRANSFORMER
- EX FORTIS POLE / ANCHOR
- EX STREETLIGHT
- EX TRAFFIC SIGNAL POLE
- PR STORM MAIN
- PR CATCHBASIN
- PR MANHOLE
- PR WATER LINE
- PR SANITARY LINE
- CONTOURS (0.2m INTERVAL)
- SOD ON 200mm DEPTH TOPSOIL
- SOD ON 500mm DEPTH TOPSOIL
- SOD ON 750mm DEPTH TOPSOIL
- 450mm DEPTH SOIL MIX PLANTING BED
- PLANTING ON LID STRUCTURE - SEE DETAILS ON LD-01
- 300mm DEPTH RIP RAP ON COMPACTED SUBGRADE
- RIP RAP BY OTHERS (APPROX. EXTENTS)
- EXISTING TREES
- PROPOSED TREES
- BOULDERS
- BENCH - BY OTHERS
- STREETLIGHT
- CHECK DAM - SEE DETAIL ON LD-02



NOTES

ALBERTA ONECALL

NAD 83 COORDINATES

NO.	DESCRIPTION	DATE	BY	APPD
1	ISSUED FOR TENDER	2024-02-12	SP	JS

PERMIT

SEAL

The Alberta Association of Landscape Architects

Jeff Schurek
Feb. 12 2024

DESIGNED	BY	DATE
SP	SP	2024-02-12
DRAWN	BY	DATE
SP	SP	2024-02-12
CHECKED	BY	DATE
JS	JS	2024-02-12

SCALE 1:250



PROJECT

TOWN OF CANMORE
TEEPEE TOWN
PHASE 2A

SEC. 33 - TWP. 24 - RGE. 10 - W 5th M

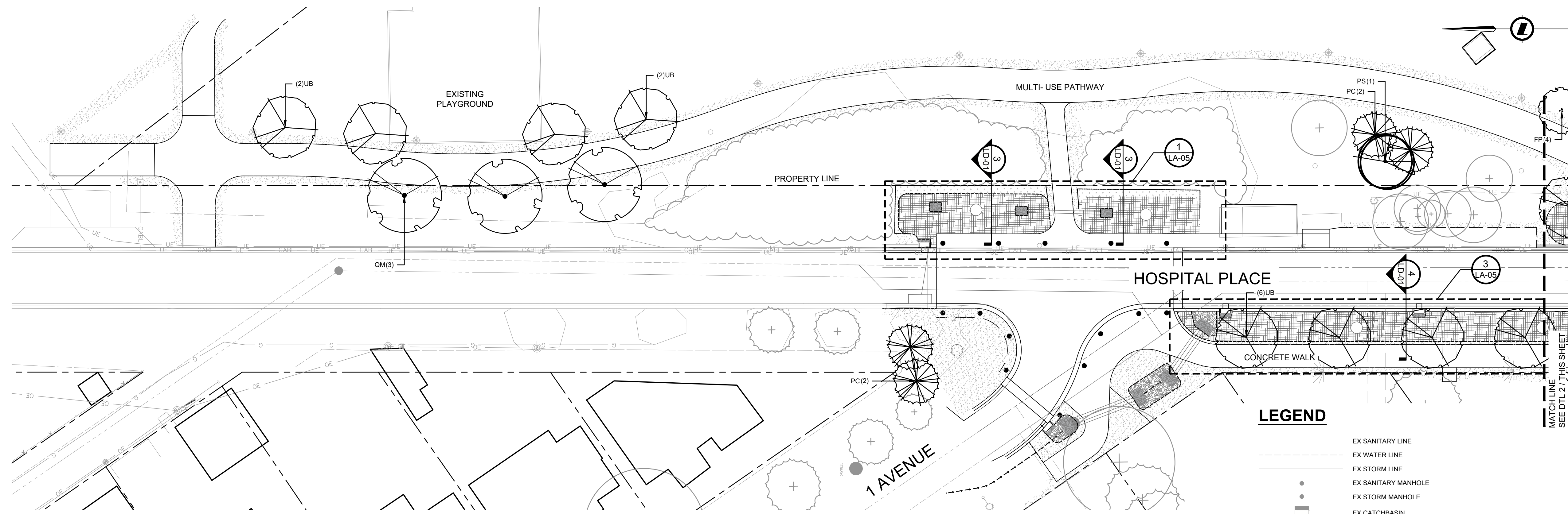
SHEET TITLE

LANDSCAPE PLAN
PLAN

FILE NO.	ENG DWG NO.
62072_P-01-03.dwg	
SHEET ID.	SHEET NO.
LA-02	2

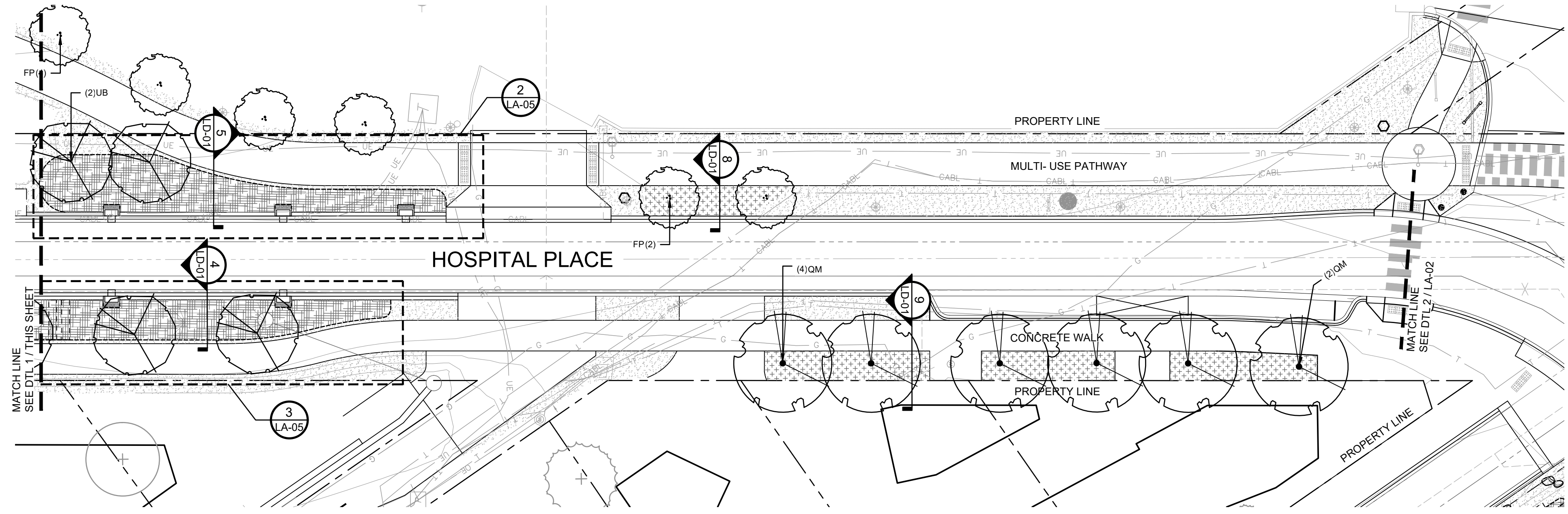
DRAWN	BY	DATE	PROFILE NO.
SP	SP	24.02.12	

FILE: G:\PROJECTS\20240206\20240206_2A_DD_CADD\20_DRAFTING\2024_PROD\LANDSCAPE\62072_TEEPEE_TOWN_PHASE_2A_DD_CADD\20_DRAFTING\2024_PROD\LANDSCAPE\62072_P-01-03.dwg DATE: February 12, 2024 3:18:18 PM



1 LANDSCAPE PLAN
PLAN

SCALE 1:250



2 LANDSCAPE PLAN
PLAN

SCALE 1:250

PLANT SCHEDULE

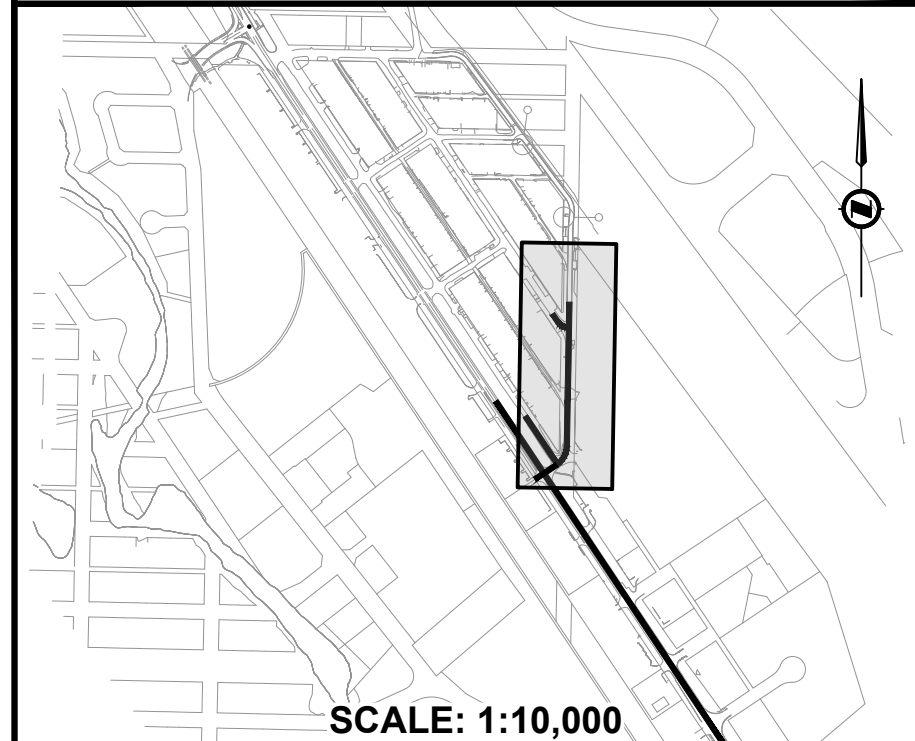
CONIFEROUS TREE	BOTANICAL NAME	COMMON NAME	REMARKS	SIZE
PC	<i>Picea pungens</i>	Colorado Spruce	Ball & Burlap	3000mm Ht.
DECIDUOUS TREES	BOTANICAL NAME	COMMON NAME	REMARKS	SIZE
FP	<i>Fraxinus pennsylvanica</i> 'Rugby'	Prairie Spire Ash	Ball & Burlap	60-70mm Cal.
PS	<i>Populus tremuloides</i>	Trembling Aspen	Ball & Burlap	60-70mm Cal.
QM	<i>Quercus macrocarpa</i>	Burr Oak	Ball & Burlap	60-70mm Cal.
UB	<i>Ulmus americana</i> 'Brandon'	Brandon American Elm	Ball & Burlap	60-70mm Cal.

SEE SHEET LA-01 FOR COMPLETE PLANT LIST

LEGEND

- EX SANITARY LINE
- EX WATER LINE
- EX STORM LINE
- EX SANITARY MANHOLE
- EX STORM MANHOLE
- EX CATCHBASIN
- EX DOUBLE CATCHBASIN
- EX DRYWELL
- EX TELUS COMM LINE
- EX TELUS AERIAL COMM LINE
- EX TELUS PEDESTAL
- EX TELUS PULLBOX
- EX TELUS MANHOLE / VAULT
- EX SHAW COMM LINE
- EX SHAW PEDESTAL
- EX ZAYO COMM LINE
- EX ATCO LP GAS LINE
- EX ATCO HP GAS LINE
- EX FORTIS OVERHEAD POWER
- EX FORTIS UNDERGROUND POWER
- EX FORTIS UTILITY VAULT
- EX FORTIS TRANSFORMER
- EX FORTIS POLE / ANCHOR
- EX STREETLIGHT
- EX TRAFFIC SIGNAL POLE
- PR STORM MAIN
- PR CATCHBASIN
- PR MANHOLE
- PR WATER LINE
- PR SANITARY LINE
- CONTOURS (0.2m INTERVAL)
- SOD ON 200mm DEPTH TOPSOIL
- SOD ON 500mm DEPTH TOPSOIL
- SOD ON 750mm DEPTH TOPSOIL
- 450mm DEPTH SOIL MIX PLANTING BED
- PLANTING ON LID STRUCTURE - SEE DETAILS ON LD-01
- 300mm DEPTH RIP RAP ON COMPACTED SUBGRADE
- RIP RAP BY OTHERS (APPROX. EXTENTS)
- EXISTING TREES
- PROPOSED TREES
- BOULDERS
- BENCH - BY OTHERS
- STREETLIGHT
- CHECK DAM - SEE DETAIL ON LD-02

KEYPLAN



NOTES

ALBERTA ONECALL NAD 83 COORDINATES

NO.	DESCRIPTION	DATE	BY	APPD
1	ISSUED FOR TENDER	2024-02-12	SP	JS

PERMIT SEAL

The Alberta Association of Landscape Architects
Jeff Schurek
Feb. 12 2024

DESIGNED	BY	DATE
SP	SP	2024-02-12
DRAWN	BY	DATE
SP	SP	2024-02-12
CHECKED	BY	DATE
JS	JS	2024-02-12

SCALE 1:250

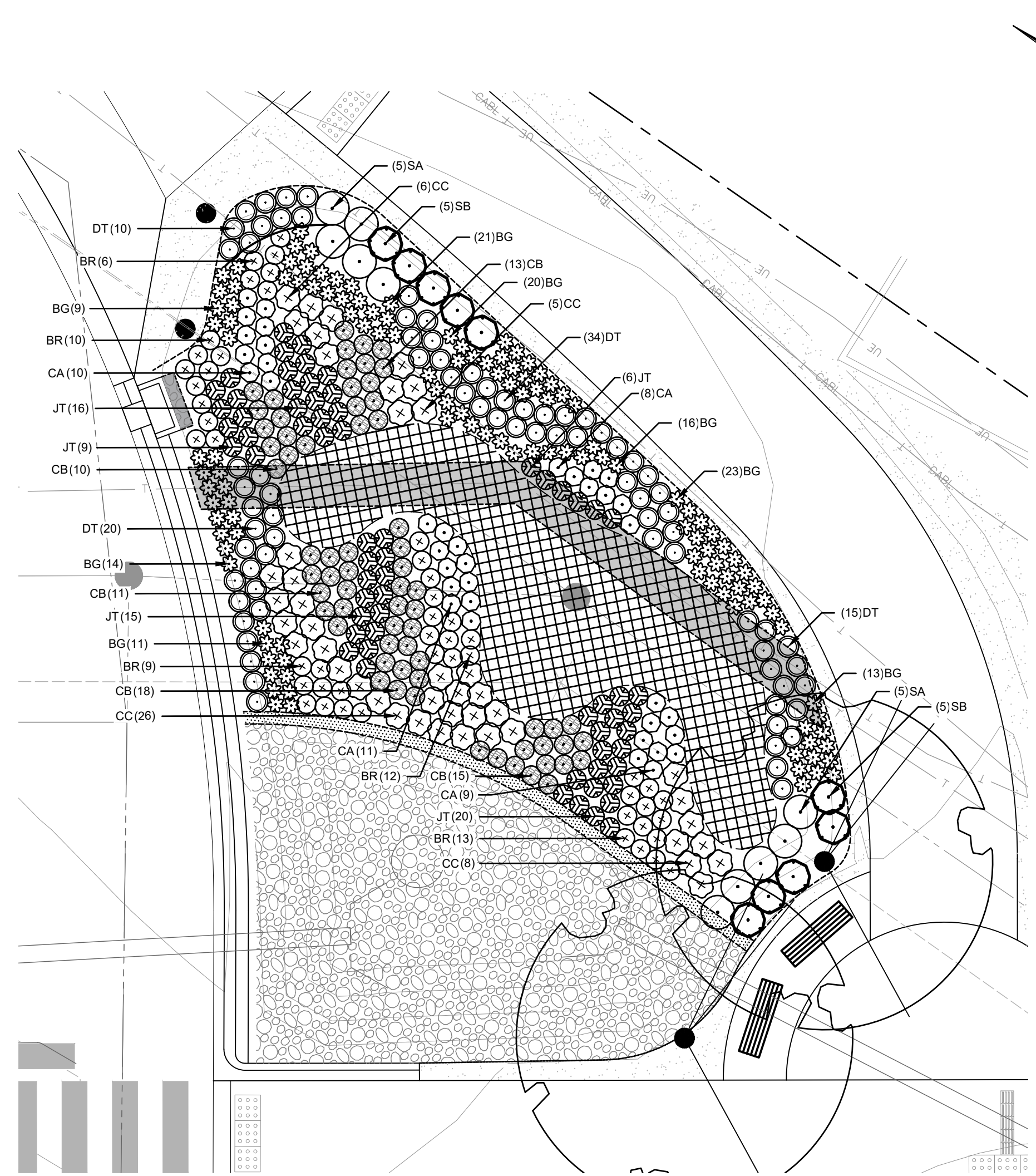
Town of CANMORE ISL

PROJECT
TOWN OF CANMORE
TEEPEE TOWN
PHASE 2A
SEC. 33 - TWP. 24 - RGE. 10 - W 5th M

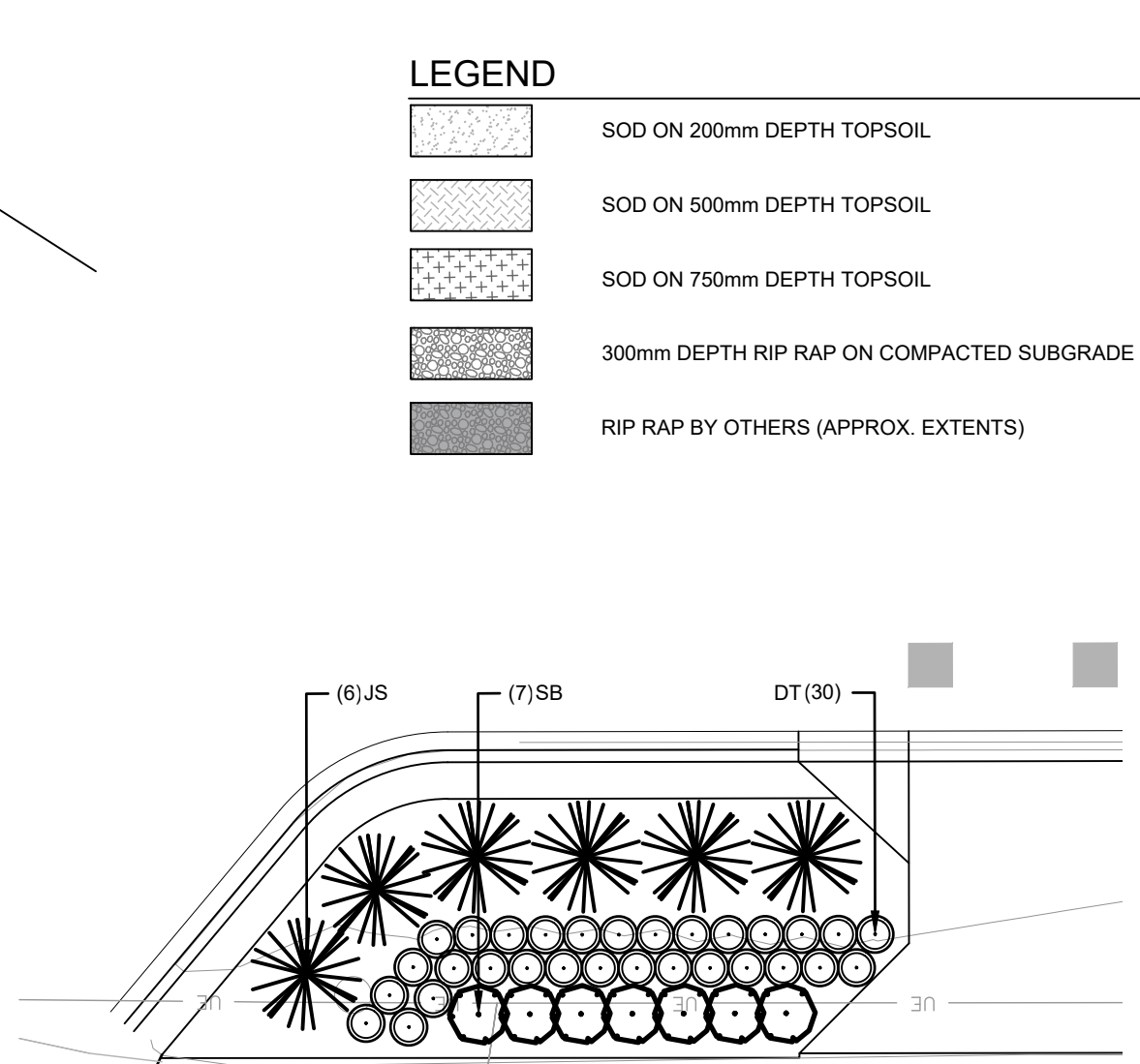
SHEET TITLE
LANDSCAPE PLAN
PLAN

FILE NO. 62072_P-01-03.dwg	ENG DWG NO.
SHEET ID. LA-03	SHEET NO. 3
BY SP	DATE 24.02.12
PROFILE NO.	

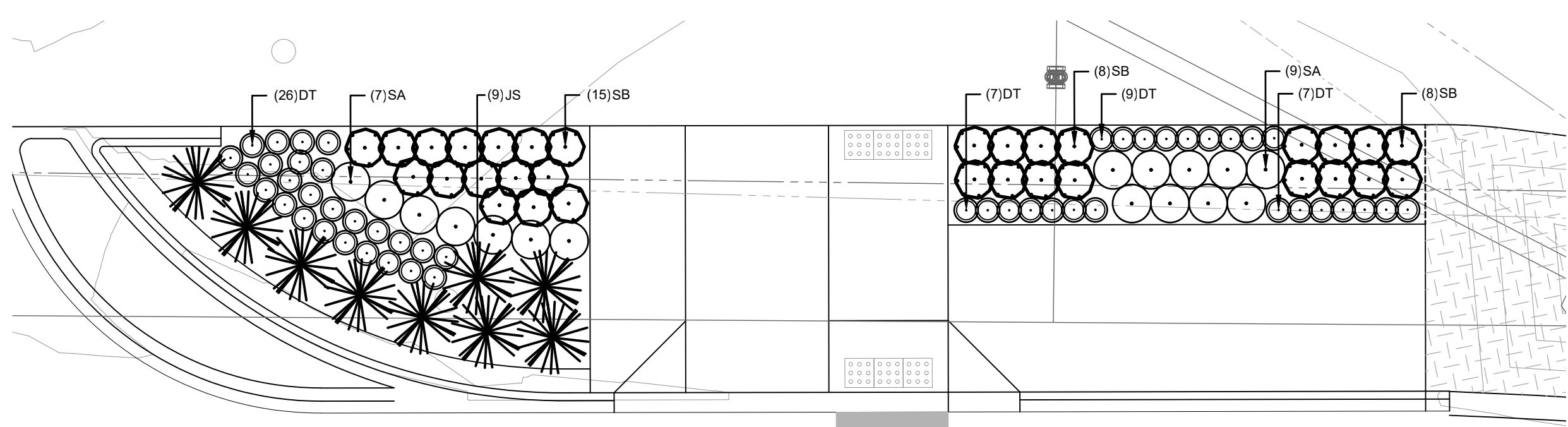
FILE: G:\PROJECTS\20240206\202402062072_TEEPEE_TOWN_PHASE_2A_DD_CADD\20_DRAFTING\202_PRODUTION\LANDSCAPE\62072_P-01-03.DWG [DATE: February 12, 2024 3:18:48 PM]



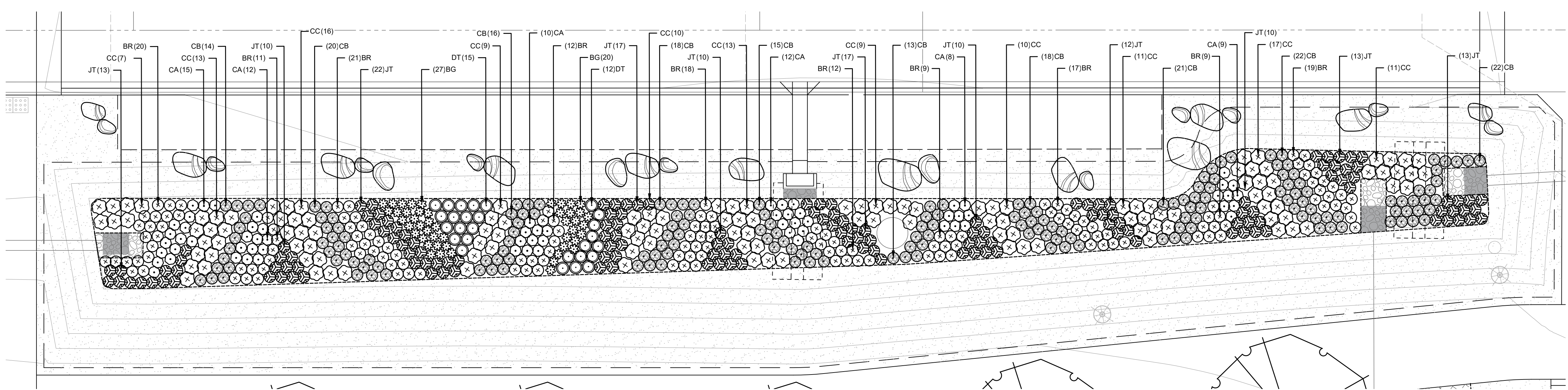
1 PLANTING PLAN - HOSPITAL PLACE SOUTH
PLAN SCALE 1:100



2 PLANTING PLAN - BUS STOP WEST
PLAN SCALE 1:100



4 PLANTING PLAN - BUS STOP EAST
PLAN SCALE 1:100



4 PLANTING PLAN - BOW VALLEY TRAIL
PLAN SCALE 1:100

LEGEND

[Pattern]	SOD ON 200mm DEPTH TOPSOIL
[Pattern]	SOD ON 500mm DEPTH TOPSOIL
[Pattern]	SOD ON 750mm DEPTH TOPSOIL
[Pattern]	300mm DEPTH RIP RAP ON COMPACTED SUBGRADE
[Pattern]	RIP RAP BY OTHERS (APPROX. EXTENTS)

PLANT SCHEDULE

LID GRASSES AND SEDGES	QTY	BOTANICAL NAME	COMMON NAME	REMARKS	SIZE
BG	823	Bouteloua gracilis	Blue Grama Grass	210mm Pot	2 Years Old
CC	314	Calamagrostis canadensis	Bluejoint Reed Grass	210mm Pot	2 Years Old
CA	247	Carex atherodes	Slough Sedge	210mm Pot	2 Years Old
CB	461	Carex bebbii	Bebb's Sedge	210mm Pot	2 Years Old
DT	623	Deschampsia cespitosa	Tufted Hair Grass	210mm Pot	2 Years Old
BR	381	Juncus balticus	Baltic Rush	210mm Pot	2 Years Old
JT	402	Juncus torreyi	Torrey's Rush	210mm Pot	2 Years Old
CONIFEROUS SHRUBS	QTY	BOTANICAL NAME	COMMON NAME	REMARKS	SIZE
JS	15	Juniperus horizontalis	Creeping Juniper	#5 Container	450mm Sp.
DECIDUOUS SHRUBS	QTY	BOTANICAL NAME	COMMON NAME	REMARKS	SIZE
PA	14	Potentilla fruticosa	Abbotswood [®] Potentilla	#2 Container	300mm Ht.
SB	65	Spiraea betulifolia	Birchleaf Spirea	#2 Container	300mm Ht.
SA	43	Symphoricarpos albus	Snowberry	#2 Container	300mm Ht.
GROUND COVERS	QTY	BOTANICAL NAME	COMMON NAME	REMARKS	SIZE
[Pattern]	42.7 m ²	LID SEED MIX	LID SEED MIX		

SEE SHEET LA-01 FOR COMPLETE PLANT LIST

KEYPLAN



NOTES

ALBERTA ONECALL

NAD 83 COORDINATES

1	ISSUED FOR TENDER	2024-02-12	SP	JS
NO.	DESCRIPTION	DATE	BY	APPD

PERMIT

SEAL

The Alberta Association of Landscape Architects

Jeff Schurek
Feb. 12 2024

DESIGNED	BY	DATE
DRAWN	SP	2024-02-12
CHECKED	JS	2024-02-12

SCALE 1:100

Town of CANMORE

ISL

PROJECT

TOWN OF CANMORE TEEPEE TOWN PHASE 2A

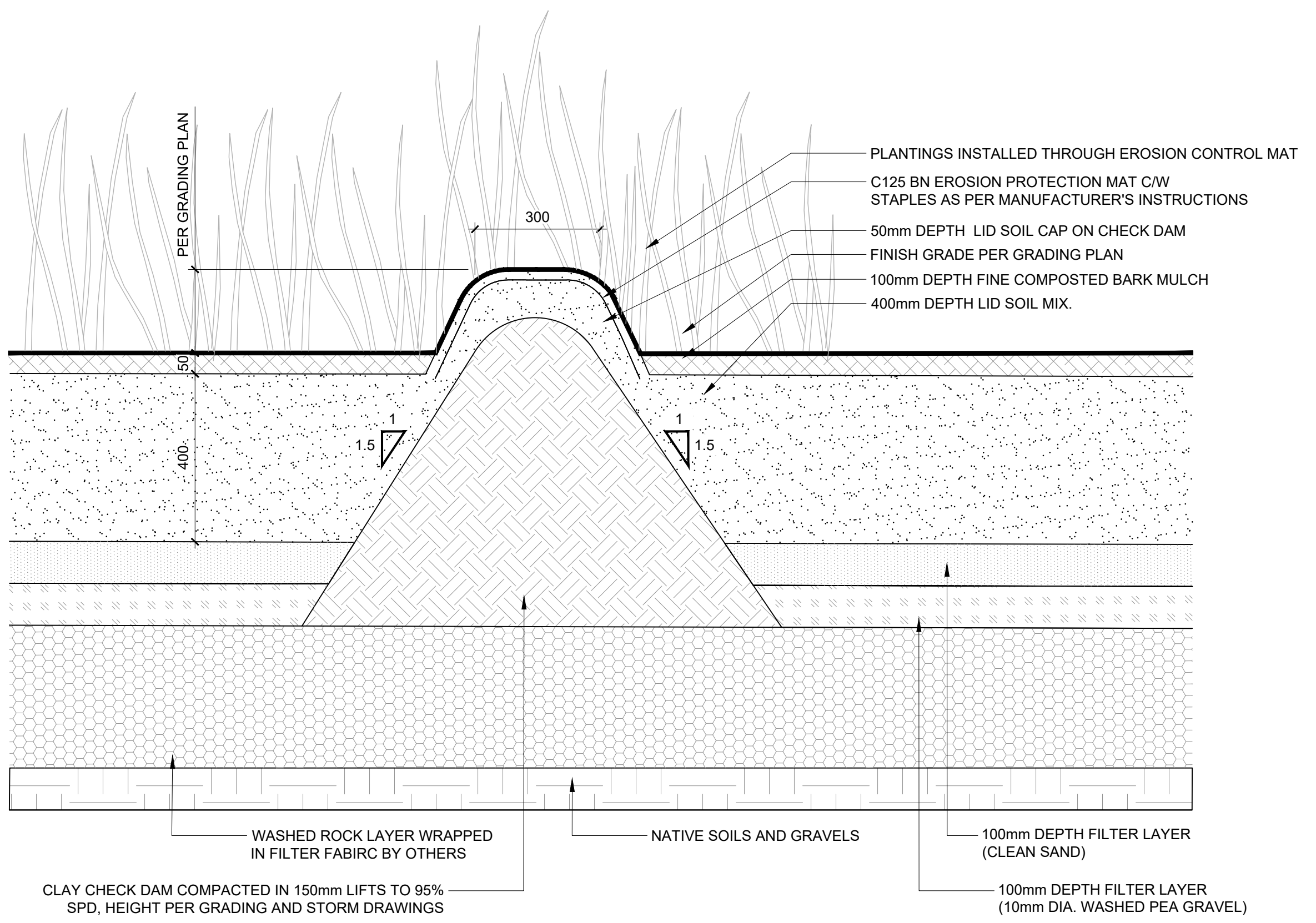
SEC. 33 - TWP. 24 - RGE. 10 - W 5th M

SHEET TITLE

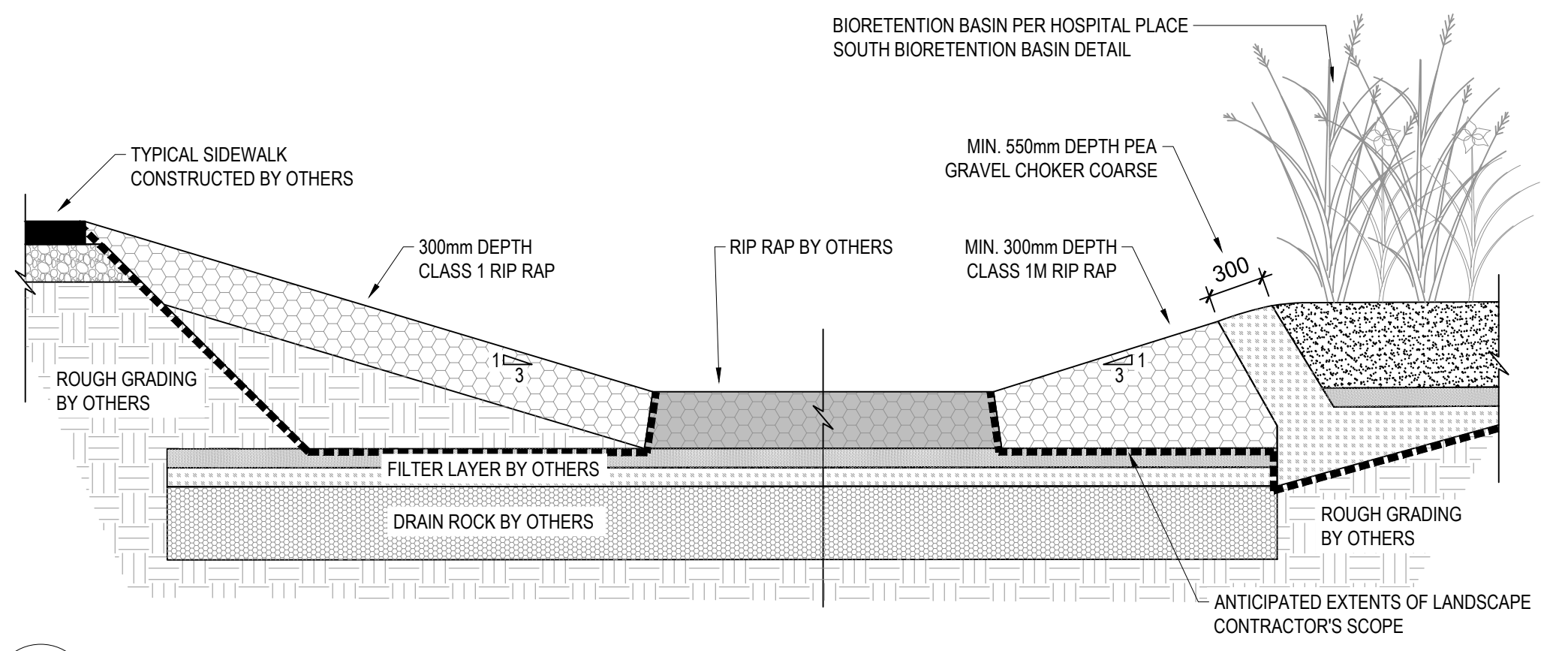
PLANTING ENLARGEMENTS 1

FILE NO.	62072_P-01-03.dwg	ENG DWG NO.
SHEET ID.	LA-04	SHEET NO.

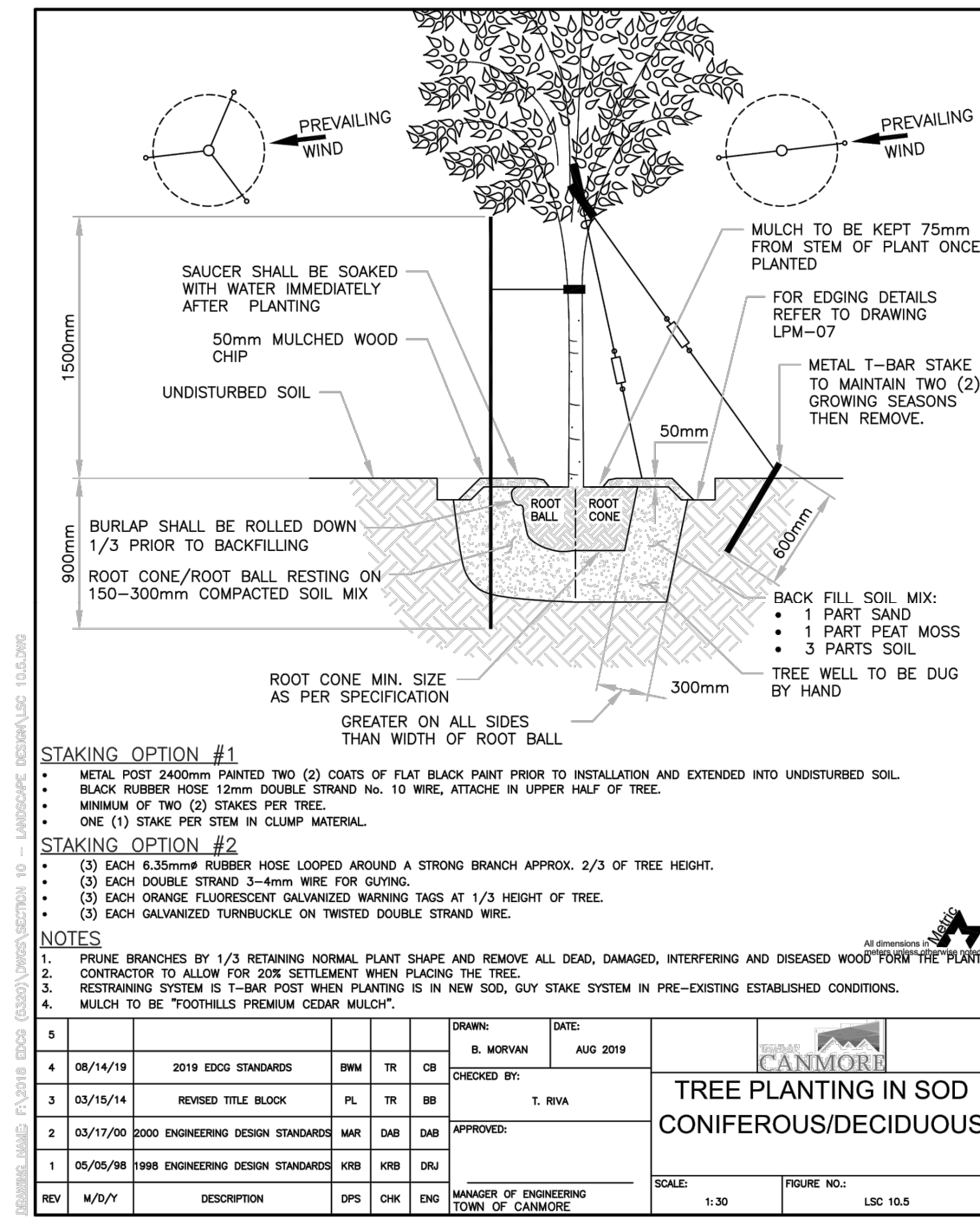
DRAWN	BY	DATE	PROFILE NO.
SP	SP	24.02.12	



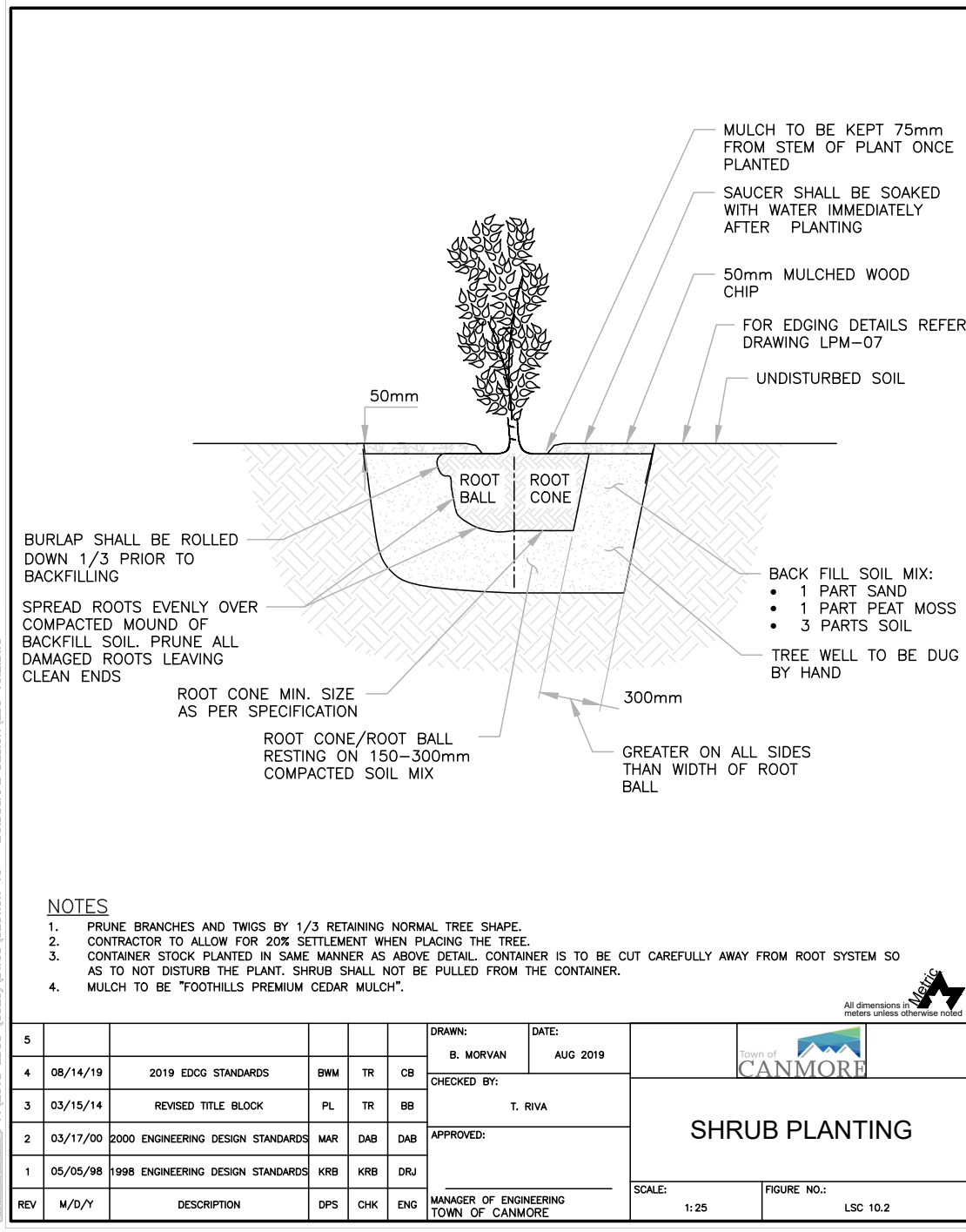
1 CLAY CHECK DAM
LD-02 1:10



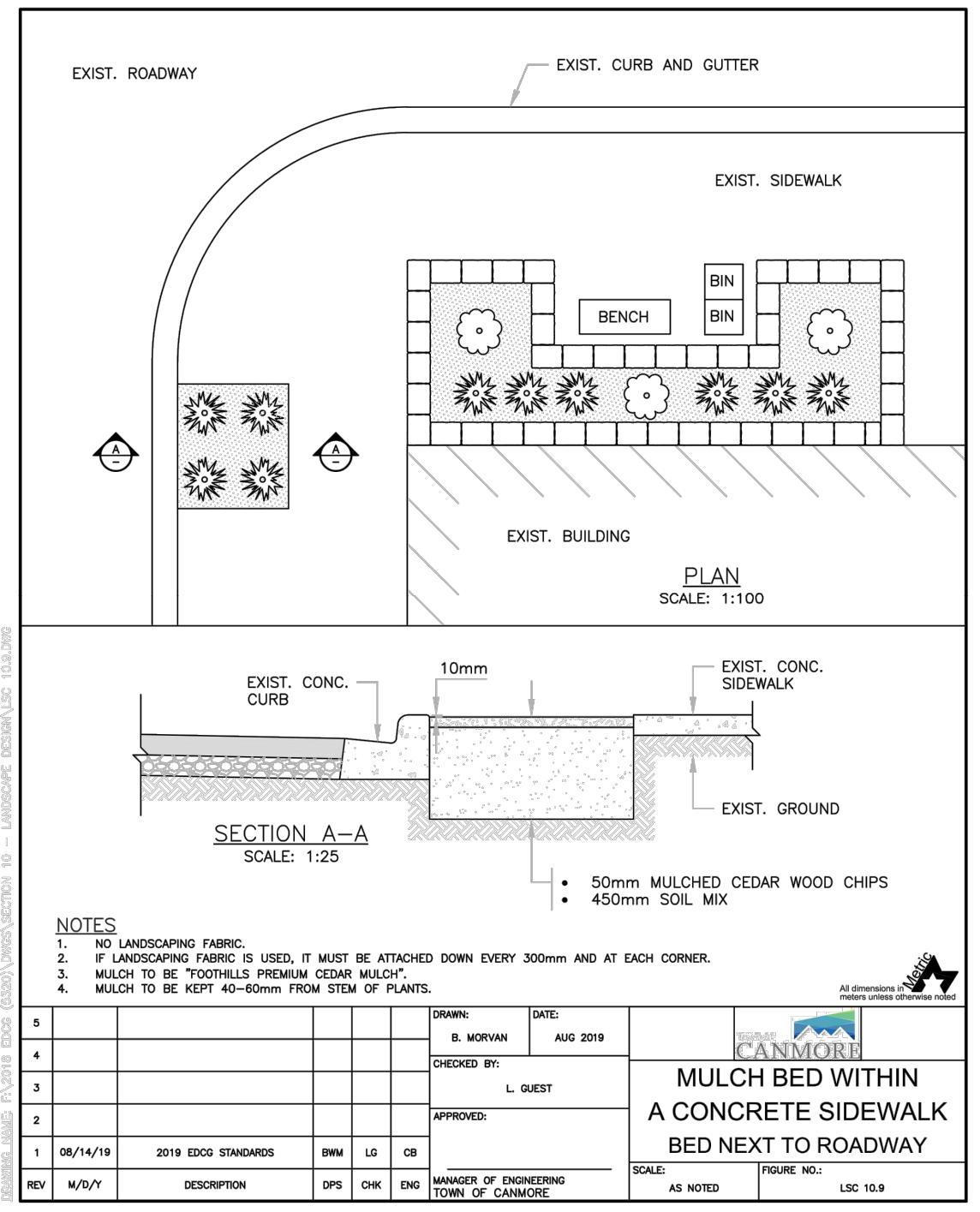
2 HOSPITAL PLACE SOUTH RIP RAP TRANSITION
LD-02 C-TE-21 1:30



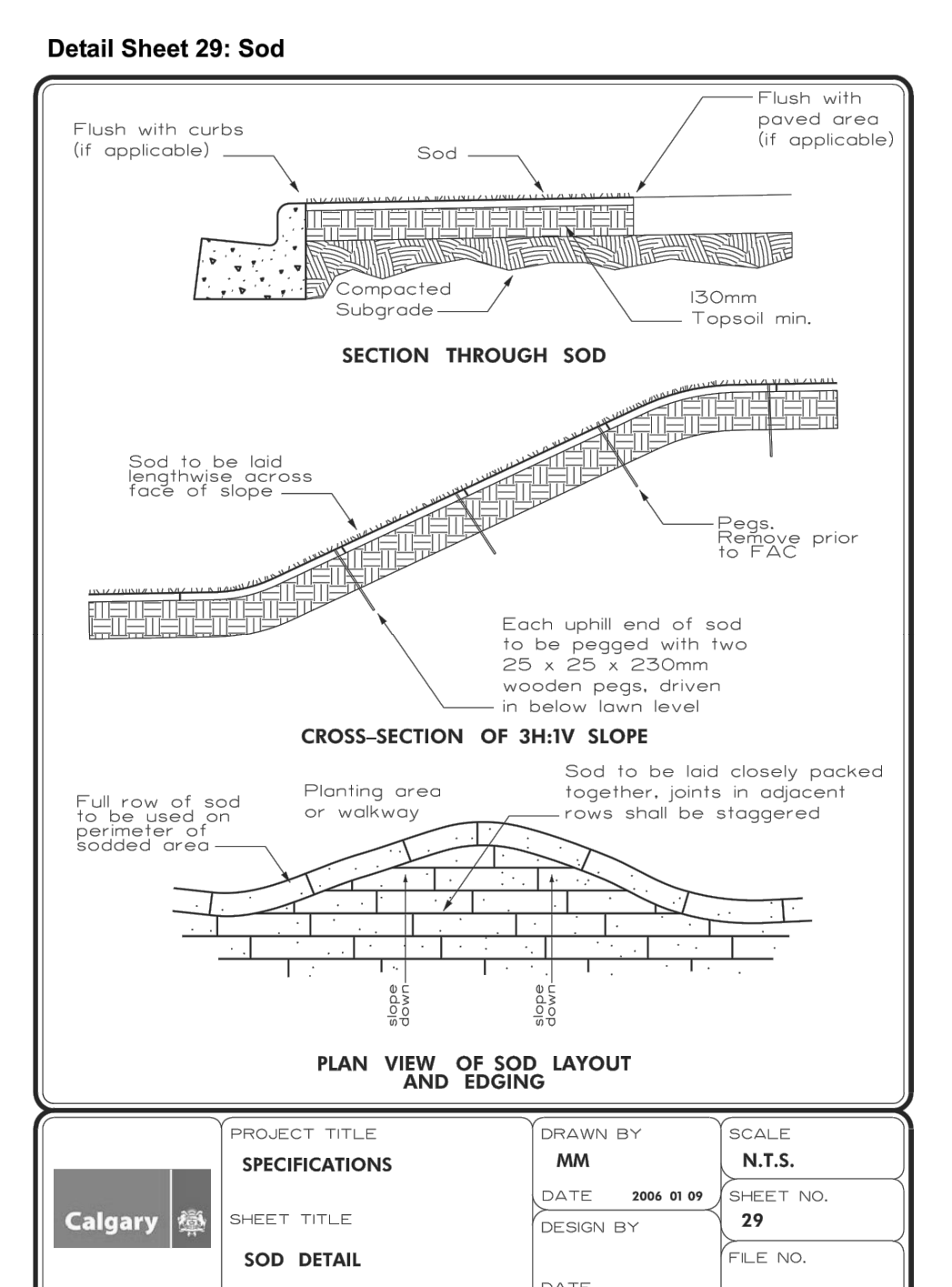
TREE PLANTING IN SOD CONIFEROUS/DECIDUOUS
Town of Canmore Engineering Design & Construction Guidelines



SHRUB PLANTING
Town of Canmore Engineering Design & Construction Guidelines

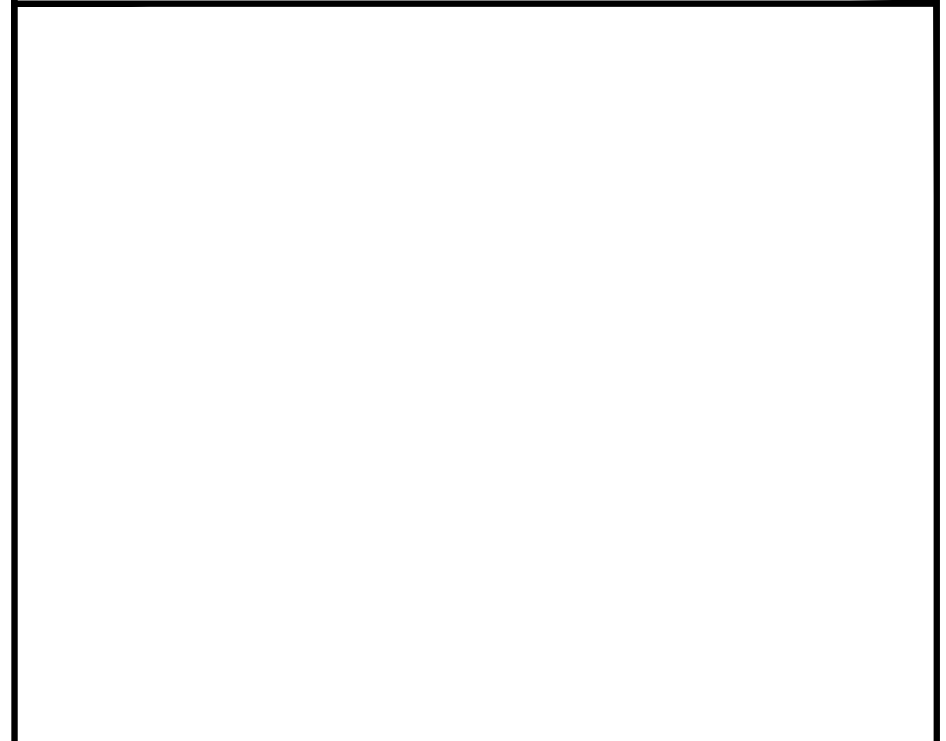


MULCH BED WITHIN A CONCRETE SIDEWALK BED NEXT TO ROADWAY
Town of Canmore Engineering Design & Construction Guidelines



Detail Sheet 29: Sod
Town of Canmore Engineering Design & Construction Guidelines

KEYPLAN



NOTES

ALBERTA ONECALL NAD 83 COORDINATES

1	ISSUED FOR TENDER	2024-02-12	SP	JS
NO.	DESCRIPTION	DATE (YYYY-MM-DD)	BY	APPD

PERMIT SEAL: The Alberta Association of Landscape Architects, Jeff Schurek, Feb. 12 2024

DESIGNED	BY SP	DATE 2024-02-12
DRAWN	BY SP	DATE 2024-02-12
CHECKED	BY JS	DATE 2024-02-12

SCALE: AS SHOWN

TOWN OF CANMORE TEEPEE TOWN PHASE 2A
SEC. 33 - TWP. 24 - RGE. 10 - W 5th M

DETAILS

FILE NO.	62072_LA 07-08.dwg	ENG DWG NO.	
SHEET ID.	LD-02	SHEET NO.	7
DRAWN	BY SP	DATE 24.02.12	PROFILE NO.

ISC: SHEET SIZE ANSI D 25 mm

FILE: G:\PROJECTS\2024\02\062072_TEEPEE_TOWN_PHASE_2A_DD_CADD\20_DRAFTING\202_PROD\LANDSCAPE\2024_07-08.dwg DATE: February 12, 2024 3:19:54 PM