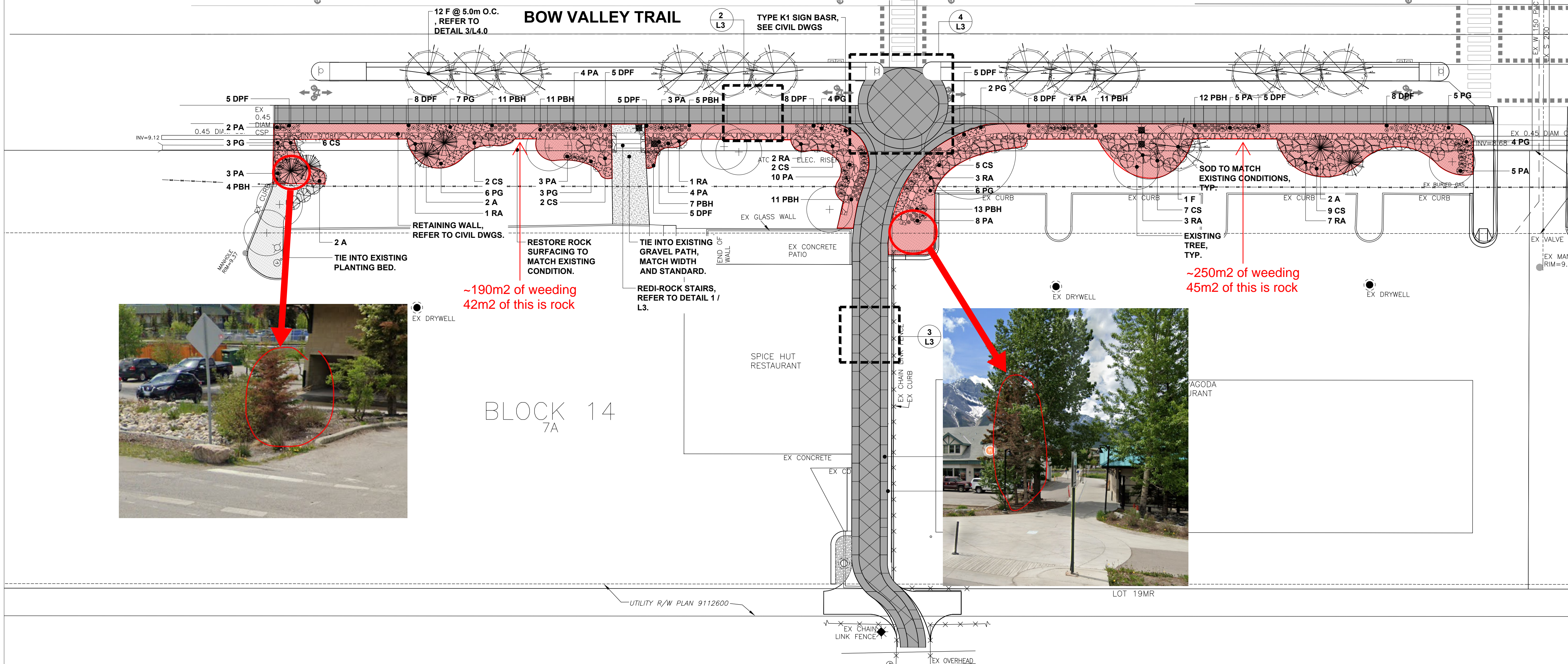


# Landscape Construction and Maintenance CAP2024

## Part 3 - Bow Valley Trail at CP Pedestrian Crossing (PROVISIONAL)

### NOTES

- GENERAL NOTES:**
1. ALL WORK SHALL CONFORM TO THE TOWN OF CANMORE CONSTRUCTION AND LANDSCAPING STANDARDS (2016) OR, IF SUPPLEMENTARY DIRECTION IS NEEDED, THE CANADIAN LANDSCAPE STANDARD.
  2. VERIFY ALL DIMENSIONS, ELEVATIONS, AND DATUM; REPORT ANY ERRORS AND/OR DISCREPANCIES TO THE OWNER PRIOR TO CONSTRUCTION.
  3. DO NOT SCALE DRAWINGS.
  4. ALL DIMENSIONS IN MILLIMETRES UNLESS OTHERWISE NOTED.
  5. PLANTING BED EDGE AND PLANT MATERIAL TO BE LAID OUT PRIOR TO CONSTRUCTION.



BLOCK 14  
7A

**1**  
**L2** LANDSCAPE PLAN  
SCALE 1:250

**NORTH**

### PLANT SCHEDULE

QTY	KEY	BOTANICAL NAME	COMMON NAME	SIZE	SPACING	NOTES
<b>TREES</b>						
6	A	ABIES LASIOCARPA	ALPINE FIR	1.5m HT.		B&B
13	F	FRAXINUS PENNSYLVANICA LANCEOLATA	GREEN ASH	50mm Cal.		B&B
<b>SHRUBS</b>						
33	CS	CORNUS SERICEA	RED OSIER DOGWOOD	#2 POT	1.5m	
51	PA	POTENTILLA FRUTICOSA 'ABBOTSWOOD'	ABBOTSWOOD POTENTILLA	#2 POT	0.8m	
40	PG	POTENTILLA FRUTICOSA 'GOLD DROP'	GOLD DROP POTENTILLA	#2 POT	0.8m	
18	RA	ROSA ACICULARIS	PRICKLY WILD ROSE	#2 POT	1.8m	
<b>GROUNDCOVERS, PERENNIALS, ORNAMENTAL GRASS&amp;VINES</b>						
56	DPF	DESCHAMPSIA CESPITOSA 'PIXIE FOUNTAIN'	DWARF TUFTED HAIR GRASS	4" POT	0.8m	
96	PBH	POA GLAUCA 'BLUE HILLS'	BLUE MEADOW GRASS	4" POT	0.6m	

**NOT FOR CONSTRUCTION**

### LEGEND

- PLAIN CONCRETE PAVING, c/w BROOM FINISH AND SAW CUT JOINTS, BROOM FINISH TO BE PERPENDICULAR TO PATH OF TRAVEL, TYP.
- TINTED CONCRETE PAVING, c/w BROOM FINISH AND SAW CUT GRID PATTERN ON 45° ANGLE.
- BARK MULCH
- GRAVEL PATH
- RETAINING WALL, REFER TO CIVIL.
- EXISTING TREES TO REMAIN QTY:10

CAP2024 Project Scope

**FOR INFORMATION ONLY - NOT FOR CONSTRUCTION**

**McElhanney**  
McElhanney Consulting Services Ltd.  
#203, 502 Bow Valley Trail  
CANMORE AB, T1W 1N9  
www.mcelhanney.com

PH (403) 609-3992  
FAX (403) 609-3989

INFORMATION ON EXISTING UTILITIES MAY NOT BE COMPLETE OR ACCURATE. PRIOR TO CONSTRUCTION CONTRACTOR SHALL EXPOSE LOCATIONS OF ALL EXISTING UTILITIES AND ADVISE THE ENGINEER OF POTENTIAL CONFLICTS.

THIS DRAWING HAS BEEN PREPARED FOR THE CLIENT IDENTIFIED, TO MEET THE STANDARDS AND REQUIREMENTS OF THE APPLICABLE PUBLIC AGENCIES. MCELHANNY CONSULTING SERVICES LTD., ITS EMPLOYEES, SUBCONSULTANTS AND AGENTS ACCEPT NO RESPONSIBILITY TO ANY OTHER PARTY, INCLUDING CONTRACTORS, SUPPLIERS, CONSULTANTS AND STAKEHOLDERS, OR THEIR EMPLOYEES OR AGENTS, FOR LOSS OR LIABILITY INCURRED AS A RESULT OF THEIR USE OF THESE DRAWINGS.

THIS DRAWING AND DESIGN IS THE PROPERTY OF MCELHANNY CONSULTING SERVICES LTD. AND SHALL NOT BE USED, REUSED OR REPRODUCED WITHOUT THE CONSENT OF THE SAID COMPANY. MCELHANNY CONSULTING SERVICES LTD. WILL NOT BE HELD RESPONSIBLE FOR THE IMPROPER OR UNAUTHORIZED USE OF THIS DRAWING AND DESIGN.

The Alberta Association of Landscape Architects

*John S. McElhanney*  
LANDSCAPE ARCHITECT

REV	D	M	Y	DESCRIPTION	DPS	CHK	ENG
02	20	09	16	ISSUED FOR INFORMATION	JL	JS	SS
01	23	08	16	ISSUED FOR TENDER	JL	JS	SS
PB	10	08	16	FINAL REVIEW	JL	JS	SS
PA	26	07	16	PRELIMINARY	JL	JS	SS

CONSULTANT: MCELHANNY CONSULTING SERVICES LTD.  
CONSULTANT FILE NUMBER: 2531-12554

SCALE: 1:250

DATE: \_\_\_\_\_

APPROVED: \_\_\_\_\_

TOWN ENGINEER: \_\_\_\_\_

ALL DIMENSIONS ARE METRES UNLESS OTHERWISE NOTED

**Town of Canmore**  
ENGINEERING SERVICES

**TOWN OF CANMORE**  
BOW VALLEY TRAIL CPR CROSSING  
LANDSCAPE PLAN

SHEET NO: L2  
TOWN FILE NO: CAP 1423