



ADDENDUM

PROJECT #: CAP 2024	ADDENDUM #: 3
	DATE OF ISSUE: March 15, 2024
PROJECT NAME: Landscape Construction and Maintenance	ISSUED BY: Trevor Reeder
	PAGE(S): 2

INSTRUCTIONS:

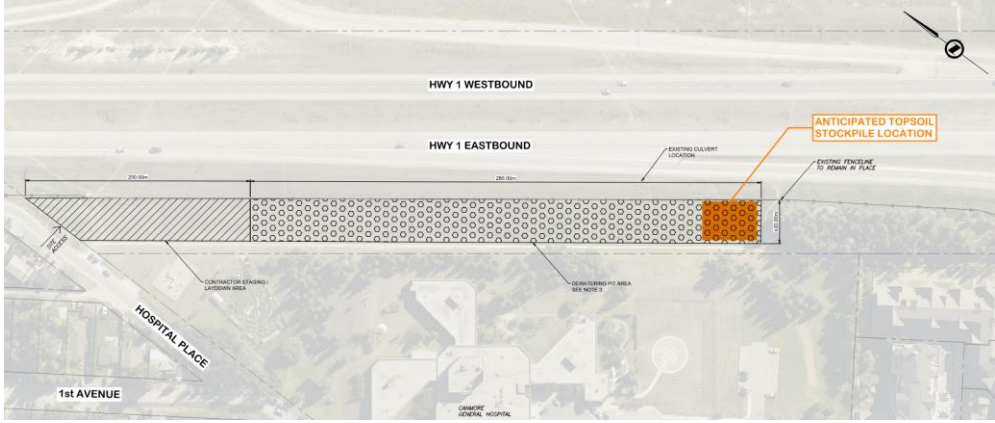
1. Amend your copy of the Request for Proposal (RFP) in accordance with the details below.
2. Retain one copy for your file; attach a second copy to your submission as confirmation that the Addendum was taken into account in your submission.

DETAILS OF ADDENDUM:

This addendum is issued to include the following:

A. RESPONSE TO REQUESTS FOR INFORMATION (RFI)

RFI No.	RFI and Response																		
1.	<p>Question: Will all work by others include excavation by others, supply and install materials by others and Landscape Contractor to follow behind to complete contract items or is the work by others completed and buried requiring the Landscape Contractor to excavate and expose completed work?</p> <p>Response: The anticipated extents of the work by others will include supply and installation of soakaway pit drainage rock and earthworks to accommodate construction of surface works adjacent to these areas. Minor excavation by the Landscape Contractor may be necessary to expose the filter fabric drainage rock that is to be removed. Minor rough grading by the Landscape Contractor may be necessary to shape the subgrade prior to installation of soils and LID materials. Refer to Attachment 1 for Stormwater Plan Profile drawings showing the anticipated location of soakaway pit drainage rock (for information).</p>																		
2.	<p>Question: Does the town have a dump area for waste and excavated materials?</p> <p>Response: No, the contractor is responsible for appropriate disposal of all waste materials.</p>																		
3.	<p>Question: Is the addendum expected to be released soon with the LID seed mix?</p> <p>Response: The LID Seed Mix is as follows:</p> <table border="1" data-bbox="360 1577 1463 1782"> <thead> <tr> <th>Botanical Name</th> <th>Common Name</th> <th>% by Weight</th> </tr> </thead> <tbody> <tr> <td>Deschampsia caespitosa</td> <td>Tufted hairgrass</td> <td>15</td> </tr> <tr> <td>Festuca saximontana</td> <td>Rocky mountain fescue</td> <td>20</td> </tr> <tr> <td>Elymus canadensis</td> <td>Canada wild rye</td> <td>25</td> </tr> <tr> <td>Elymus trachycaulus subsecundus</td> <td>Awned wheatgrass</td> <td>30</td> </tr> <tr> <td>Koeleria macrantha</td> <td>Junegrass</td> <td>10</td> </tr> </tbody> </table> <p>The LID Seed Mix area shown on the drawings is to include the above seed mix applied at a rate of 32kg/ha and plugs of the species, size and density noted in item B1 below.</p>	Botanical Name	Common Name	% by Weight	Deschampsia caespitosa	Tufted hairgrass	15	Festuca saximontana	Rocky mountain fescue	20	Elymus canadensis	Canada wild rye	25	Elymus trachycaulus subsecundus	Awned wheatgrass	30	Koeleria macrantha	Junegrass	10
Botanical Name	Common Name	% by Weight																	
Deschampsia caespitosa	Tufted hairgrass	15																	
Festuca saximontana	Rocky mountain fescue	20																	
Elymus canadensis	Canada wild rye	25																	
Elymus trachycaulus subsecundus	Awned wheatgrass	30																	
Koeleria macrantha	Junegrass	10																	

<p>4.</p>	<p>Question: Where will stockpiled topsoil be located?</p> <p>Response: The surface works contractor is placing the topsoil stockpile at the southernmost end of the their laydown area located south of Highway 1.</p> 
<p>5.</p>	<p>Question: Can we get all Proposal Forms in WORD docx for this tender?</p> <p>Response: Refer to section D. regarding the release of Proposal Forms in Word .docx format.</p>
<p>6.</p>	<p>Question: Do we anticipate any more addendums?</p> <p>Response: Further addenda are not anticipated.</p>

B. ADDITIONAL TEEPEE TOWN PHASE 2A PLANT MATERIAL

B.1 The following plugs are to be installed within the area noted on plans as “LID Seed Mix” (approx., 45m²):

Botanical Name	Common Name	Size	Density	Total
Carex atherodes	Awned Sedge	125-150ml	3 per m ²	135
Juncus balticus	Baltic Rush	125-150ml	3 per m ²	135

The supplier’s name, address, and contact information is to be provided to the Town’s Representative for acceptance prior to procurement of this plant material.

B.2 Please see Attachment 2. Bid Form for Part 1 Teepee Town 2A Landscaping updated to include bid item for “LID Plant Material – Plugs” (Item 1.4.6), to be installed in the area shown as “LID Seed Mix” on the drawings.

C. RELEASE OF PRE-PROPOSAL MEETING AGENDA AND MINUTES

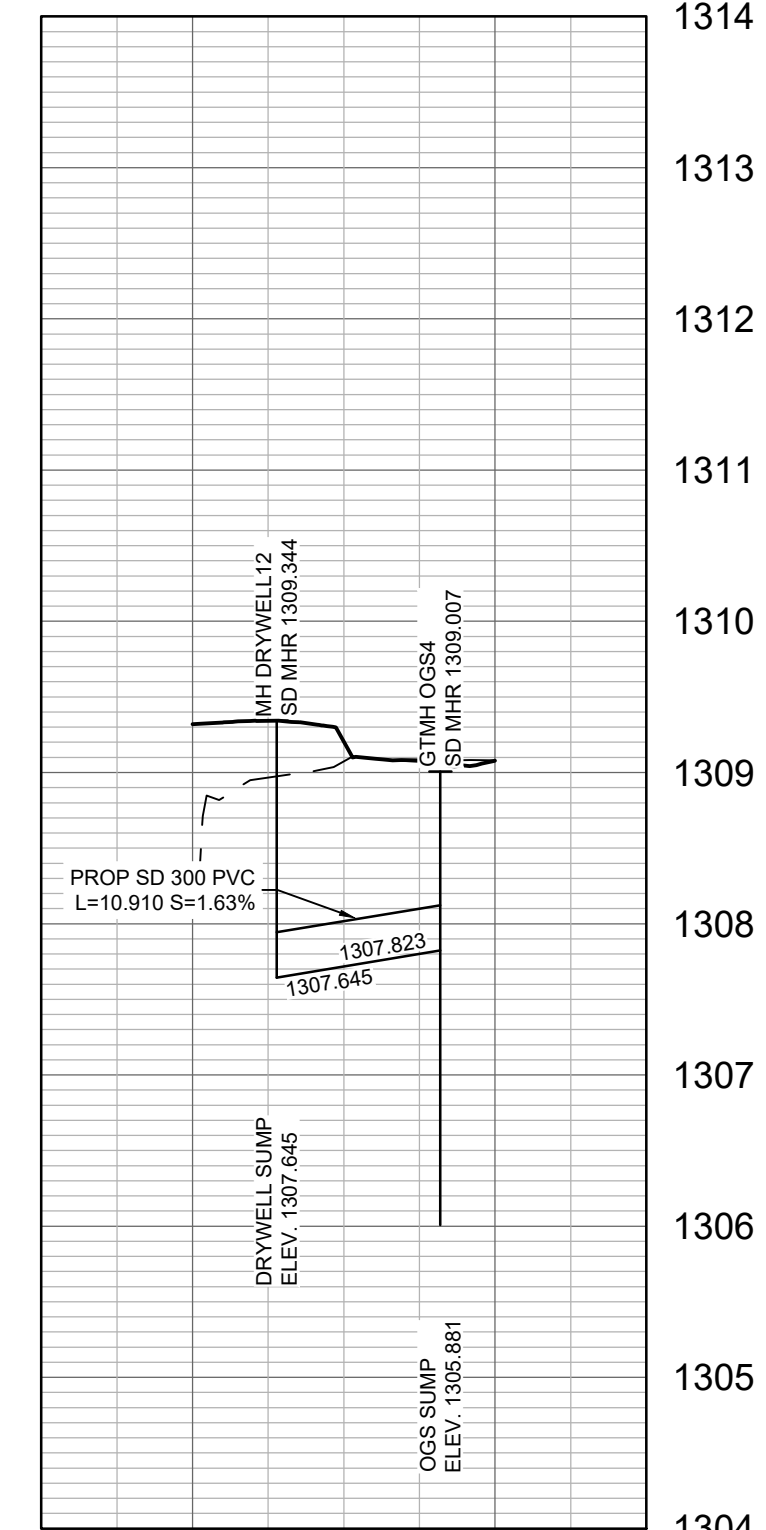
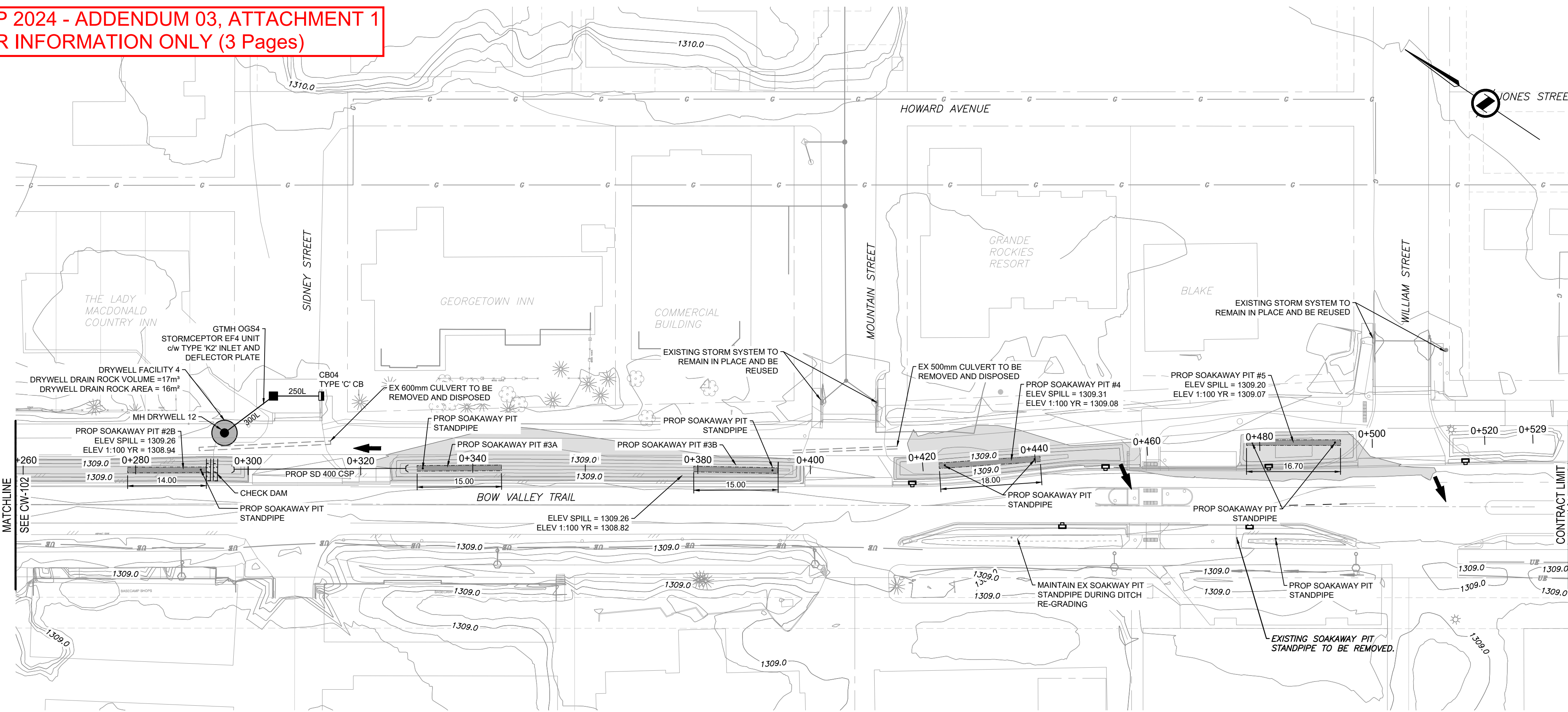
Please see Attachment 3.

D. RELEASE OF PROPOSAL FORMS IN WORD .DOCX FORMAT

Please see Attachment 4.

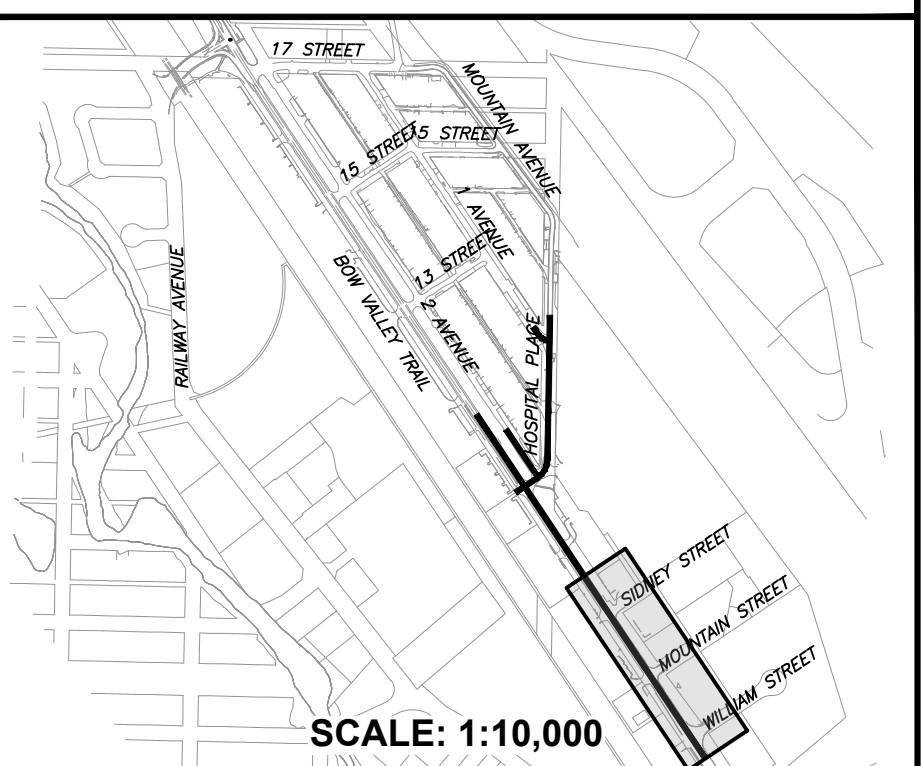
ALL OTHER TERMS AND CONDITIONS REMAIN UNCHANGED

**CAP 2024 - ADDENDUM 03, ATTACHMENT 1
FOR INFORMATION ONLY (3 Pages)**



1 DRYWELL FACILITY 4
CW-101

KEYPLAN



NOTES

1. ALL PIPE SIZES ARE IN MILLIMETRES AND ALL DIMENSIONS ARE IN METRES UNLESS OTHERWISE NOTED.
2. ALL COORDINATES AND DISTANCES ARE BASED ON 3TM COORDINATE SYSTEM (NAD 83).
3. UTILITIES AND STRUCTURES SHOWN ON THIS DRAWING WERE COMPILED FROM INFORMATION PROVIDED BY OTHERS AND MAY NOT BE COMPLETE OR ACCURATE. UTILITIES ARE APPROXIMATE AND MAY HAVE BEEN OFFSET FOR CLARITY. CONTRACTOR SHALL COORDINATE WITH MUNICIPAL AND UTILITY OWNERS TO VERIFY THE STATUS, CONDITION AND LOCATION OF ALL UTILITIES PRIOR TO COMMENCING ANY WORK.
4. DRYWELL c/w TROJAN INDUSTRIES TF50CBE STYLE GRATE OR APPROVED EQUIVALENT. REFER TO DETAIL 2 ON CW-412 FOR DETAILS.
5. ALL CB LEADS AND CULVERT ENDS WHICH DAYLIGHT TO GROUND SURFACE REQUIRE A RIPRAP APRON. SEE DETAIL 1 ON CW-410 FOR RIPRAP DETAILS.
6. FINAL DITCH SURFACE AND CHECK DAMS ARE SHOWN FOR REFERENCE, AND SHALL BE COMPLETED BY A SEPARATE LANDSCAPE CONTRACTOR.



NAD 83
COORDINATES

ISSUED FOR CONSTRUCTION

0	ISSUED FOR CONSTRUCTION	2024-02-13	ABM	DB
NO.	DESCRIPTION	DATE	BY	APPD

DESIGNED	DJW	2024-01-11
DRAWN	AS	2024-01-11
CHECKED	FM	2024-01-11

SCALE	1:500 (HORZ)	0 10 20 m
	1:50 (VERT)	0 1 2 m



PROJECT
**TOWN OF CANMORE
TEEPEE TOWN
PHASE 2A**
SEC. 33 - TWP. 24 - RGE. 10 - W 5th M

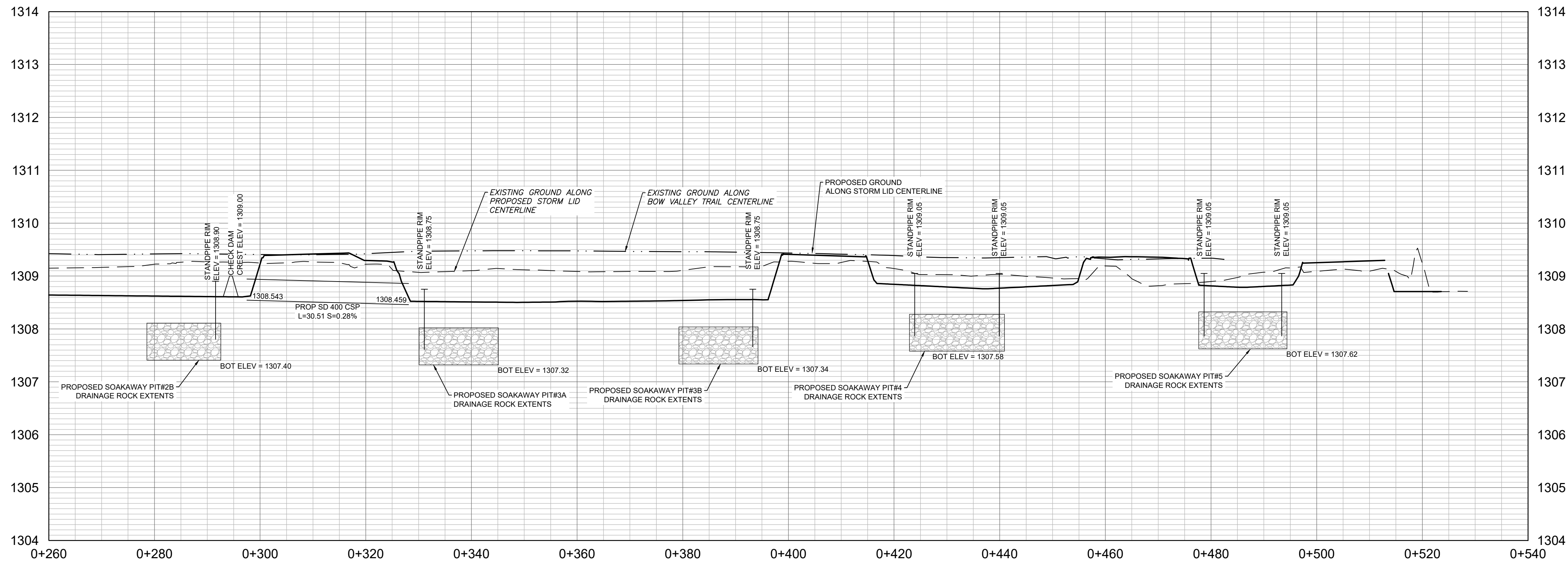
SHEET TITLE
**STORMWATER PLAN PROFILE
BOW VALLEY TRAIL**

FILE NO. 62072_PP_STM-BVT.dwg ENG DWG NO.

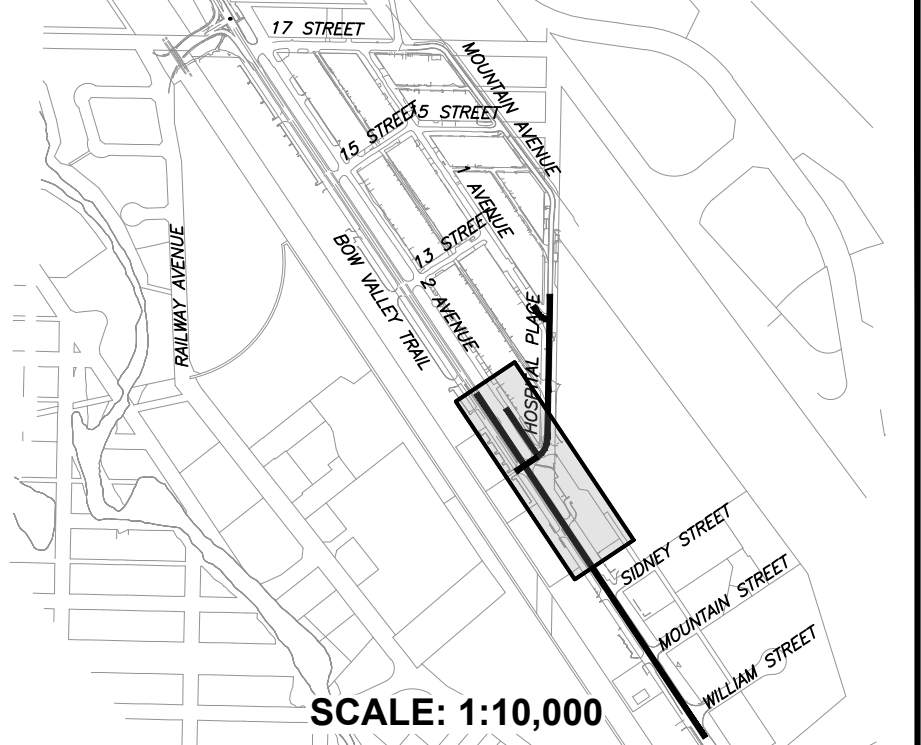
SHEET ID. CW-101 SHEET NO. 41

BY DATE PROFILE NO.

ISC. SHEET SIZE ANSI D 25 mm



KEYPLAN



SCALE: 1:10,000

NOTES

1. ALL PIPE SIZES ARE IN MILLIMETRES AND ALL DIMENSIONS ARE IN METRES UNLESS OTHERWISE NOTED.
2. ALL COORDINATES AND DISTANCES ARE BASED ON 3TM COORDINATE SYSTEM (NAD 83).
3. UTILITIES AND STRUCTURES SHOWN ON THIS DRAWING WERE COMPILED FROM INFORMATION PROVIDED BY OTHERS AND MAY NOT BE COMPLETE OR ACCURATE. UTILITIES ARE APPROXIMATE AND MAY HAVE BEEN OFFSET FOR CLARITY. CONTRACTOR SHALL COORDINATE WITH MUNICIPAL AND UTILITY OWNERS TO VERIFY THE STATUS, CONDITION AND LOCATION OF ALL UTILITIES PRIOR TO COMMENCING ANY WORK.
4. DRYWELL c/w TROJAN INDUSTRIES TF50CBEE STYLE GRATE OR APPROVED EQUIVALENT. REFER TO DETAIL 2 ON CW-412 FOR DETAILS.
5. ALL CB LEADS AND CULVERT ENDS WHICH DAYLIGHT TO GROUND SURFACE REQUIRE A RIPRAP APRON. SEE DETAIL 1 ON CW-410 FOR RIPRAP DETAILS.
6. FINAL DITCH SURFACE AND CHECK DAMS ARE SHOWN FOR REFERENCE, AND SHALL BE COMPLETED BY A SEPARATE LANDSCAPE CONTRACTOR.



NAD 83
COORDINATES

ISSUED FOR CONSTRUCTION

NO.	DESCRIPTION	DATE	BY	APPD
0	ISSUED FOR CONSTRUCTION	2024-02-13	ABM	DB

DESIGNED	BY	DATE
DJW	DJW	2024-01-11
DRAWN	BY	DATE
AS	AS	2024-01-11
CHECKED	BY	DATE
FM	FM	2024-01-11

SCALE 1:500 (HORZ) 0 10 20 m
1:50 (VERT) 0 1 2 m



TOWN OF CANMORE
TEEPEE TOWN
PHASE 2A
SEC. 33 - TWP. 24 - RGE. 10 - W 5th M

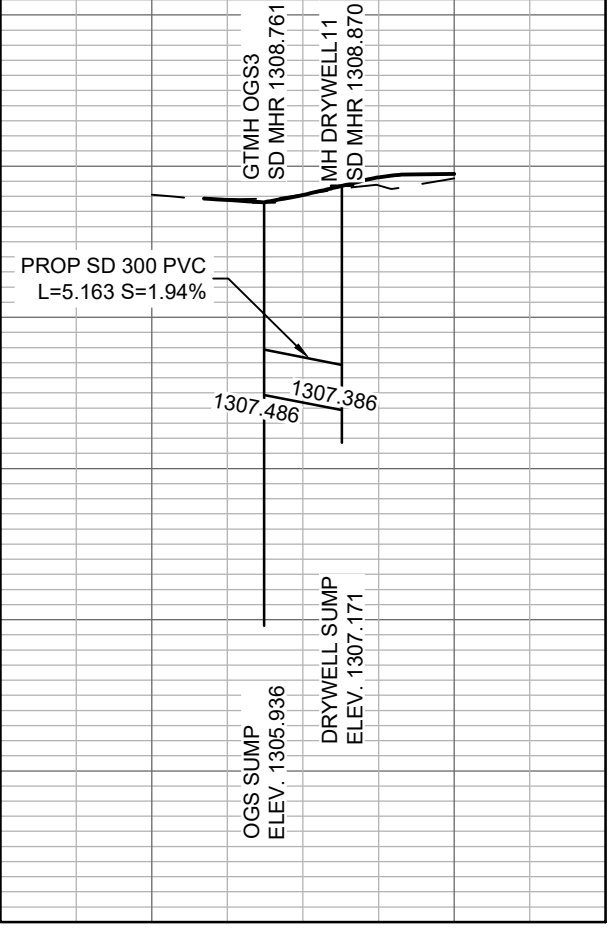
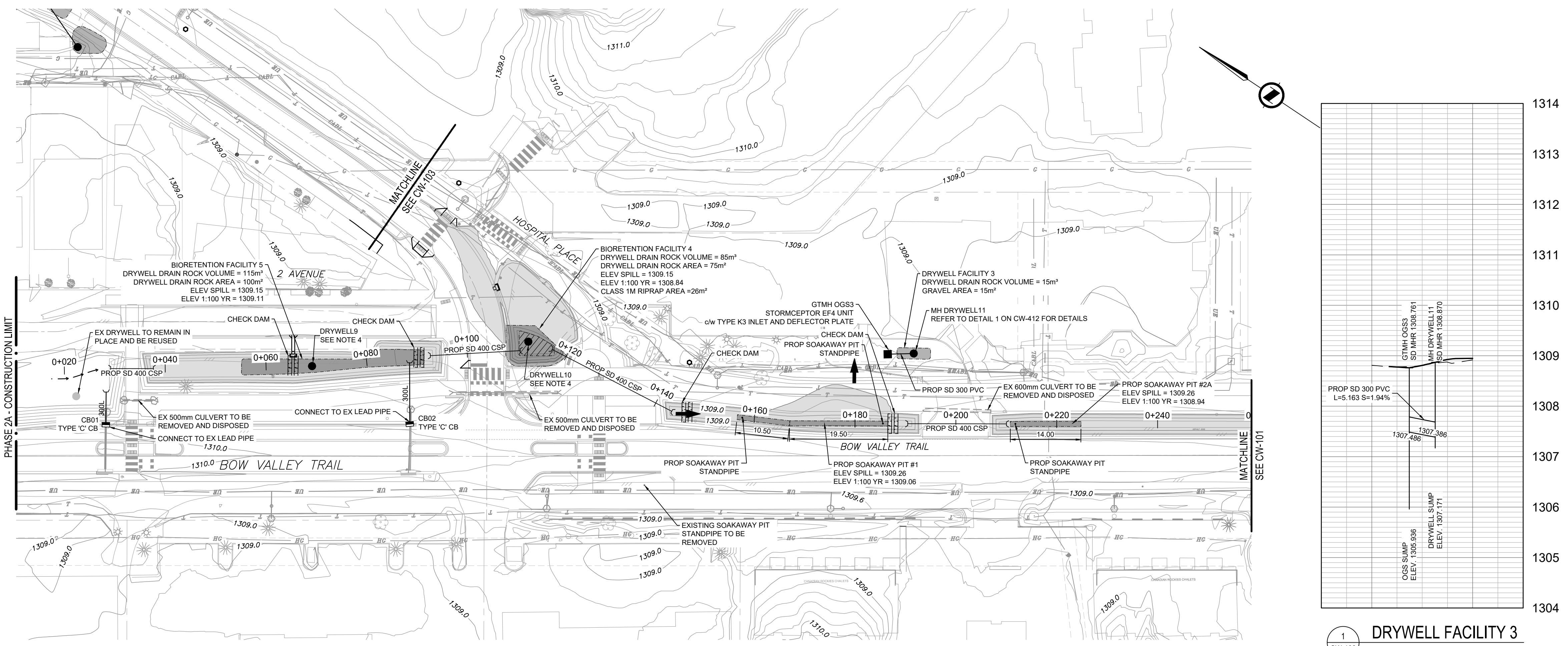
SHEET TITLE
STORMWATER PLAN PROFILE
BOW VALLEY TRAIL

FILE NO. 62072_PP_STM-BVT.dwg ENG DWG NO.

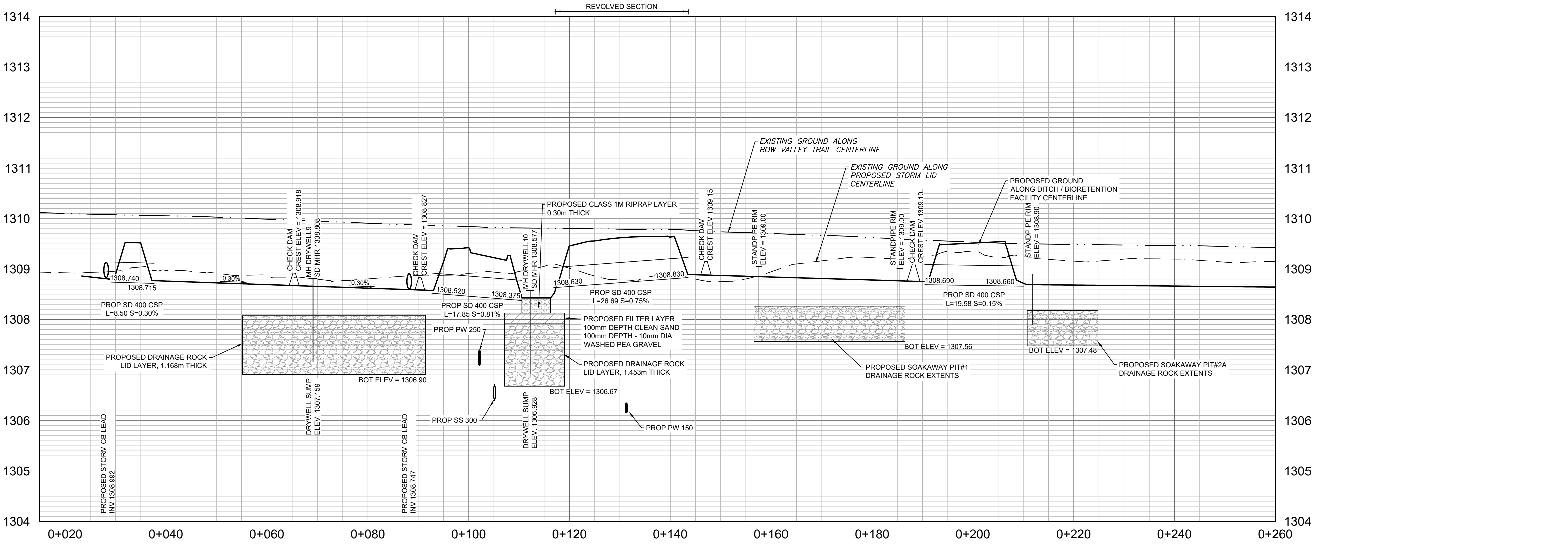
SHEET ID. **CW-102** SHEET NO. **42**

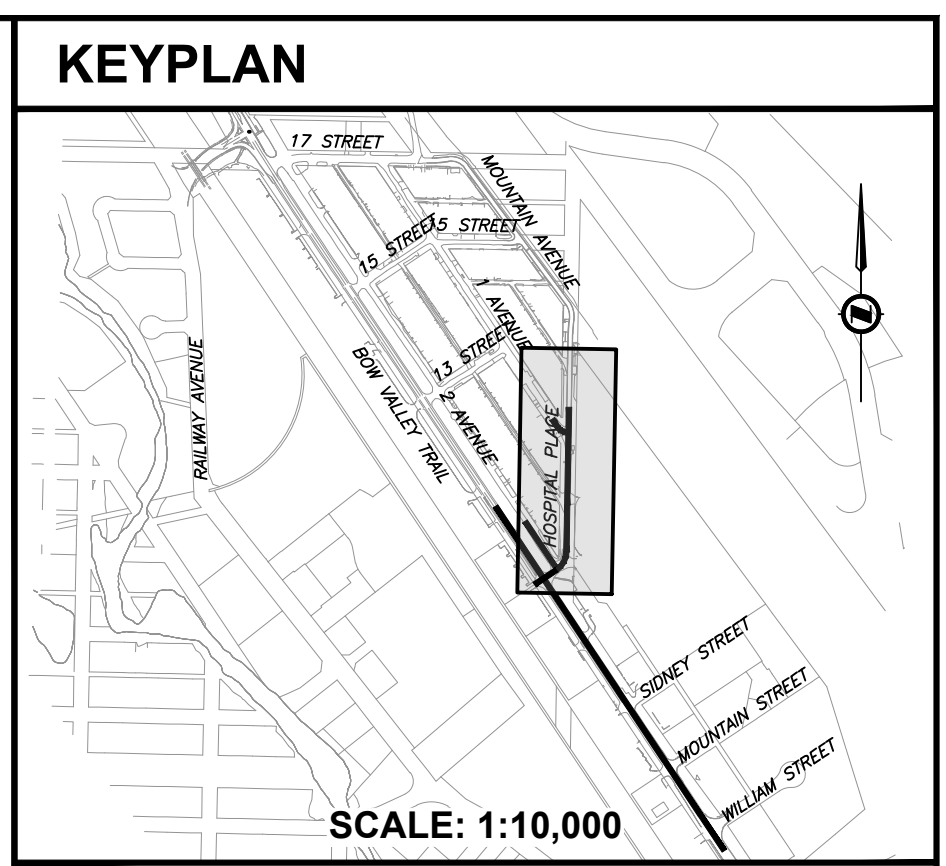
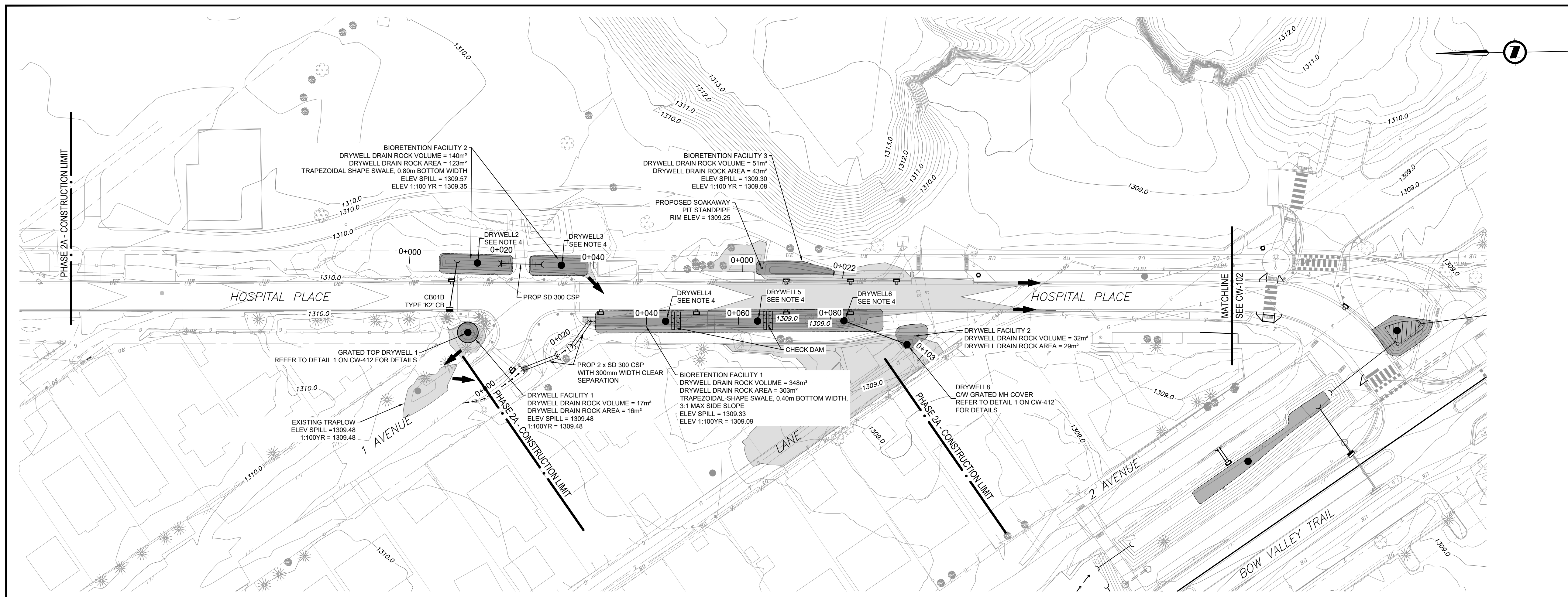
BY DATE PROFILE NO.

ISC SHEET SIZE ANSI D 25 mm



1 DRYWELL FACILITY 3





- NOTES**
- ALL PIPE SIZES ARE IN MILLIMETRES AND ALL DIMENSIONS ARE IN METRES UNLESS OTHERWISE NOTED.
 - ALL COORDINATES AND DISTANCES ARE BASED ON 3TM COORDINATE SYSTEM (NAD 83).
 - UTILITIES AND STRUCTURES SHOWN ON THIS DRAWING WERE COMPILED FROM INFORMATION PROVIDED BY OTHERS AND MAY NOT BE COMPLETE OR ACCURATE. UTILITIES ARE APPROXIMATE AND MAY HAVE BEEN OFFSET FOR CLARITY. CONTRACTOR SHALL COORDINATE WITH MUNICIPAL AND UTILITY OWNERS TO VERIFY THE STATUS, CONDITION AND LOCATION OF ALL UTILITIES PRIOR TO COMMENCING ANY WORK.
 - DRYWELL CW TROJAN INDUSTRIES TF50CBEE STYLE GRATE OR APPROVED EQUIVALENT. REFER TO DETAIL 2 ON CW-412 FOR DETAILS.
 - ALL CB LEADS AND CULVERT ENDS WHICH DAYLIGHT TO GROUND SURFACE REQUIRE A RIPRAP APRON. SEE DETAIL 1 ON CW-410 FOR RIPRAP DETAILS.
 - FINAL DITCH SURFACE AND CHECK DAMS ARE SHOWN FOR REFERENCE, AND SHALL BE COMPLETED BY A SEPARATE LANDSCAPE CONTRACTOR.

ALBERTA ONECALL

NAD 83 COORDINATES

ISSUED FOR CONSTRUCTION

NO.	DESCRIPTION	DATE (YYYY-MM-DD)	BY	APPD
0	ISSUED FOR CONSTRUCTION	2024-02-13	ABM	DB

PERMIT _____ SEAL _____

DESIGNED	BY	DATE (YYYY-MM-DD)
DJW		2024-01-11

DRAWN	BY	DATE (YYYY-MM-DD)
AS		2024-01-11

CHECKED	FM	DATE (YYYY-MM-DD)
		2024-01-11

SCALE: 1:500 (HORZ) 0 10 20 m
 1:50 (VERT) 0 1 2 m

Town of CANMORE

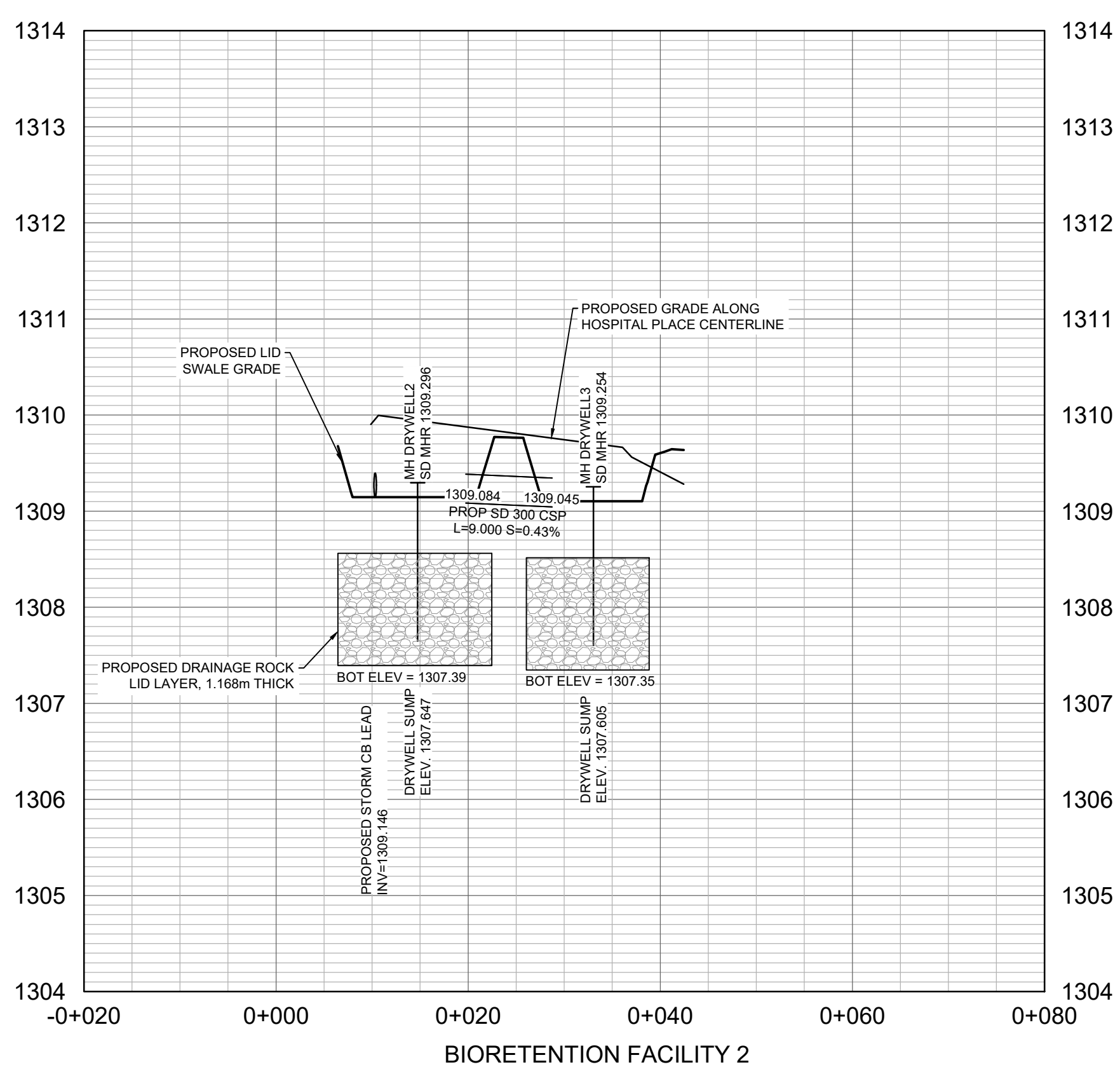
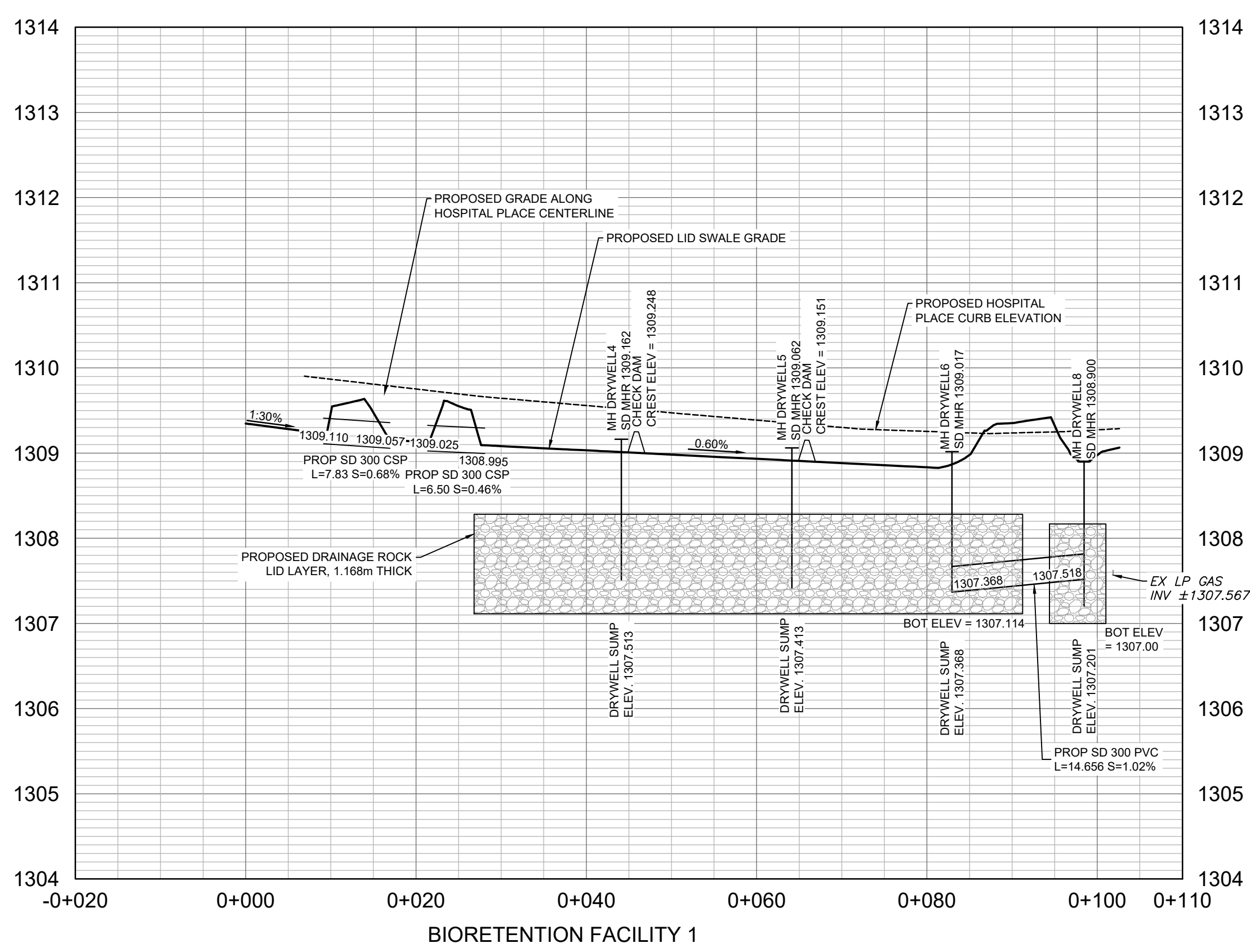
ISL

PROJECT: TOWN OF CANMORE TEEPEE TOWN PHASE 2A
 SEC. 33 - TWP. 24 - RGE. 10 - W 5th M

SHEET TITLE: STORMWATER PLAN PROFILE HOSPITAL PLACE

FILE NO. 62072_PP_STM-HP.dwg	ENG DWG NO.
SHEET ID. CW-103	SHEET NO. 43

BY	DATE (YYYY-MM-DD)	PROFILE NO.



FILE: G:\PROJECTS\2024\02\062072_TEEPEE_TOWN_PHASE_2A_DD_CADD\20_DRAFTING\202_PROD\2024_PP_STM-HP.DWG [DATE: Tuesday, February 13, 2024 11:04:16 AM]



*Landscape Construction and Maintenance
Pricing Form
Part 1 - Teepee Town Phase 2A Landscaping*

Item	Description of Work	Reference	Unit	Estimated Quantity	Unit Price Bid	Total Extended Price
General						
1 .1 .1	Mobilization and Demobilization	7.06-7.13	LS	1	\$	\$
Earthworks						
1 .2 .1	Waste Excavation	7.14	m ³	100	\$	\$
1 .2 .1	Check Dam Installation	7.14	ea.	7	\$	\$
Subgrade Preparation and Topsoil						
1 .3 .1	Topsoil placement from stockpile (200mm Depth)	7.15	m ²	2590	\$	\$
1 .3 .2	Topsoil placement from stockpile (500mm Depth)	7.15	m ²	1600	\$	\$
1 .3 .3	Imported Topsoil - Planting Bed (450mm Depth)	7.15	m ²	90	\$	\$
1 .3 .4	Topsoil placement from stockpile (750mm Depth)	7.15	m ²	270	\$	\$
1 .3 .5	LID Soil Media (400mm Depth)	7.15, LIDG 3.5	m ²	725	\$	\$
1 .3 .6	LID Clean Sand (100mm Depth)	7.15, LIDG 3.3	m ²	440	\$	\$
1 .3 .7	LID 10mm Pea Gravel (100mm Depth)	7.15, LIDG 3.3	m ²	440	\$	\$
1 .3 .8	LID Drain Rock (400mm Depth)	7.15, LIDG 3.2	m ²	180	\$	\$
1 .3 .9	Class IM Rip Rap (300mm Depth)	7.19	m ²	65	\$	\$
1 .3 .10	LID 10mm Pea Gravel (550mm Depth)	7.15, LIDG 3.3	m ²	5	\$	\$
Seed, Turf, Mulch, and Plant Material						
1 .4 .1	Sod	7.16, EDCG 10.4.6	m ²	4460	\$	\$
1 .4 .2	LID Seed Mix	7.16, EDCG 10.4.5	m ²	45	\$	\$
1 .4 .3	LID Composted Wood Mulch (100mm Depth)	7.17, LIDG 3.6	m ²	725	\$	\$
1 .4 .4	Typical Planting Bed Wood Mulch (100mm Depth)	7.17, EDCG	ea.	90	\$	\$
<u>LID Plant Material</u>						
1 .4 .5	LID Plant Material - Grasses and Sedges per plans	7.16, EDCG 10.5	ea.	3251	\$	\$
1 .4 .6	LID Plant Material - Plugs	7.16, EDCG 10.5	ea.	270	\$	\$
1 .4 .7	Birchleaf Spirea / Spiraea betulifolia	7.16, EDCG 10.5	ea.	10	\$	\$
1 .4 .8	Snowberry / Symphoricarpos albus	7.16, EDCG 10.5	ea.	10	\$	\$
<u>Ornamental Shrub Plant Material</u>						
1 .4 .9	Creeping Juniper / Juniperus horizontalis	7.16, EDCG 10.5	ea.	15	\$	\$
1 .4 .10	Birchleaf Spirea / Spiraea betulifolia	7.16, EDCG 10.5	ea.	38	\$	\$

Pricing Form

1 .4.11	Snowberry / Symphoricarpos albus	7.16, EDCG 10.5	ea.	16	\$	\$
1 .4.12	Turfed Hair Grass / Deschampsia Cespitosa	7.16, EDCG 10.5	ea.	80	\$	\$
	Naturalized Shrub Plant Material					
1 .4.13	Abbotswood Potentilla / Potentilla fruticosa 'Abbotswood'	7.16, EDCG 10.5	ea.	14	\$	\$
1 .4.14	Birchleaf Spirea / Spiraea betulifolia	7.16, EDCG 10.5	ea.	17	\$	\$
1 .4.15	Snowberry / Symphoricarpos albus	7.16, EDCG 10.5	ea.	17	\$	\$
	Trees					
1 .4.16	Colorado Spruce / Picea pungens	7.16, EDCG 10.5	ea.	7	\$	\$
1 .4.17	Prairie Spire Ash / Fraxinus pennsylvanica 'Rugby'	7.16, EDCG 10.5	ea.	19	\$	\$
1 .4.18	Trembling Aspen / Populus tremuloides	7.16, EDCG 10.5	ea.	1	\$	\$
1 .4.19	Burr Oak / Quercus macrocarpa	7.16, EDCG 10.5	ea.	20	\$	\$
1 .4.20	Brandon American Elm / Ulmus americana 'Brandon'	7.16, EDCG 10.5	ea.	20	\$	\$
	Surface Features					
1 .5 .1	Boulder Installation (Supplied by Town)	7.18	ea.	60	\$	\$
	Maintenance					
1 .6 .1	2 year maintenance period	7.2, DGSSLC, LIDG	LS	1	\$	\$
Part 1 - Teepee Town Phase 2A Landscaping Subtotal						



Project:	Landscape Maintenance and Construction	Project No.:	CAP2024 / ISL 62079
Client:	The Town of Canmore	Meeting Date:	February 28, 2024
Location:	Microsoft Teams Meeting	Meeting Time:	10:00AM
Purpose:	RFP Proponents Meeting	Meeting No.:	01

MEETING WILL START PROMPTLY AT 10:00AM

- 1.0 Introductions
- 2.0 Project Overview
 - 2.1 Teepee Town Phase 2A
 - 2.2 West Bow River Pathway
 - 2.3 Bow Valley Trail at CP Pedestrian Crossing (provisional)
 - 2.4 Other work at the discretion of the Town (provisional)
- 3.0 Teepee Town Phase 2A Infrastructure
 - 3.1 Work – Landscaping including excavation and grading, placement of LID gravel, sand and soil, grading, planting and mulch
 - 3.2 Specifics of the Contract
 - 3.2.1 Coordination with utilities and roadway construction by others
 - 3.2.2 Tree protection
 - 3.2.3 Excavation/rough grading
 - 3.2.4 LID construction requirements
 - 3.2.5 Maintenance and warranty requirements for new construction
- 4.0 Request for Proposals
 - 4.1 Milestone Dates
 - Last day to submit RFI – March 5, 2024
 - Last day for issuance of addenda / RFI responses – March 8, 2024
 - RFP submission deadline – March 12, 2024
 - Construction completion – Varies/ per RFP document
 - 4.2 RFIs – send to Trevor Reeder by email (Trevor.Reeder@Canmore.ca), response via addendum
 - 4.3 RFP Process
 - 4.3.1 Objective of Process
 - 4.3.2 Three Part Process – Mandatory Components, Qualifications, Financial
 - 4.3.3 Evaluation Timeline – 1 week following RFP deadline
- 5.0 Addenda
 - 5.1 Addendum 2 (expected Friday March 1)
 - LID Seed mix
- 6.0 Questions / Adjournment



101-621 10 Street, Canmore AB T1W 2A2, T: 403.678.4211 F: 877.725.8140

Project:	Landscape Maintenance and Construction RFP	Project No.:	62079
Client:	Town of Canmore	Meeting Date:	February 28, 2024
Location:	Microsoft Teams Meeting	Meeting Time:	10:00am
Purpose:	Proponents Meeting	Meeting No.:	01
In Attendance:	Trevor Reeder (ToC), Sarah Purchase (ISL), Chris Yarkie (C&B Maintenance), Ellen MacCallum (All Star Landscaping), Isaiah Omisore (Wilco), Garrett Brink (Wilco), Christine Chapma (Urban Life Solutions). Brad Neate (Year Round Landscaping)	Written By:	SP
Distribution:	Attendees		

The subjects discussed and decisions reached are summarized in the following record. Please notify the author of any errors or omissions. If no comments are received within 7 days this record is considered correct.

Item No.	Description	Action By
1.0	Introductions Trevor Reeder, Town of Canmore – Town contact Sarah Purchase, ISL Engineering – Consultant contact	Info
2.0	Project Overviews	
2.1	Teepee Town – Landscaping after utilities and hard surface construction is completed by others including boulders, trees, LID with plantings and seed and sod, 2 year warranty.	Info
2.2	West Bow River Pathway – Tree and shrub placement on private property adjacent to the new pathway at the direction of the Town, with no warranty.	Info
2.3	CP Pedestrian Crossing – Provisional, plant replacement and refreshing of landscaping along BVT with 1 year warranty.	Info
2.4	There will be a meeting within 14 days of award to review the group of projects and the processes for the contract. Each project will have its own construction startup meeting prior to work starting on each project to review project specific items in advance of the work.	Info
3.0	Detailed Scope for Teepee Town Phase 2A	
3.1	General scope: <ul style="list-style-type: none"> Landscaping including boulders, trees, LID with plantings and seed, sod Brief overview of LID construction (see Calgary’s LID Module 2) Plant material 	Info
3.2	Specifics of the contract: <ul style="list-style-type: none"> Coordination with the other contractor will be ongoing. There will be a walkthrough of the areas that the other contractor has completed with all parties to confirm the condition is suitable for handoff. It is expected that 	Info



Item No.	Description	Action By
	<p>the work will be handed over in up to four pieces, depending on the other contractor’s schedule. The Town will support coordination between the all parties.</p> <ul style="list-style-type: none"> • Tree protection will be in place by the other contractor and is expected to remain in place and be respected. • Excavation and subgrade preparation after other contractor completes basics of grading to build utilities and surface infrastructure. • LID soil, sand and gravels to meet specifications in City of Calgary LID Module 2. Soil for other areas to be sourced from material stripped by others, testing will be done by owner to confirm suitability for use. There are locations where the other contractor will have installed washed rock wrapped in filter fabric for storm water storage. The landscape contractor will be required to remove the fabric at the interface between the rock reservoir and the pea gravel layer to be constructed, keeping the washed gravels free of debris and fines. • 2 year maintenance period, and progress claims during maintenance will require maintenance logs for processing. 	
<p>4.0</p> <p>4.1</p> <p>4.2</p> <p>4.3</p>	<p>Request for Proposals</p> <p>Milestone Dates:</p> <ul style="list-style-type: none"> • Last day to submit RFI – March 5, 2024 • Last day for issuance of addenda / RFI responses – March 8, 2024 • RFP submission deadline – March 12, 2024, 2:00pm • Construction completion – Varies per project <p>RFI’s to be sent to Trevor.Reeder@Canmore.ca with responses via addendum.</p> <p>RFP Process Overview: Submission of 2 files</p> <ul style="list-style-type: none"> • File #1 <ul style="list-style-type: none"> - Mandatory components – proposal submission form, consent of surety, certificate of insurance, WCB letter of account - Qualifications proposal forms • File #2 <ul style="list-style-type: none"> - Pricing form (schedule B) - Force account rates (schedule C) - for info only <p>Evaluation Process</p> <ul style="list-style-type: none"> • Mandatory components reviewed for completeness • Qualifications evaluated (Team worth 20 points, Firm profile and experience 20 worth points, Responsiveness 5 points, Quality control and safety 5 points) - 50 points total • Pricing is evaluated against lowest bid to assign score out of 50 	<p>Info</p> <p>Info</p> <p>Info</p>
<p>5.0</p>	<p>Addenda Addendum 2 to include the LID seed mix, expected to be issued Friday March 1.</p>	<p>Town/ISL</p>